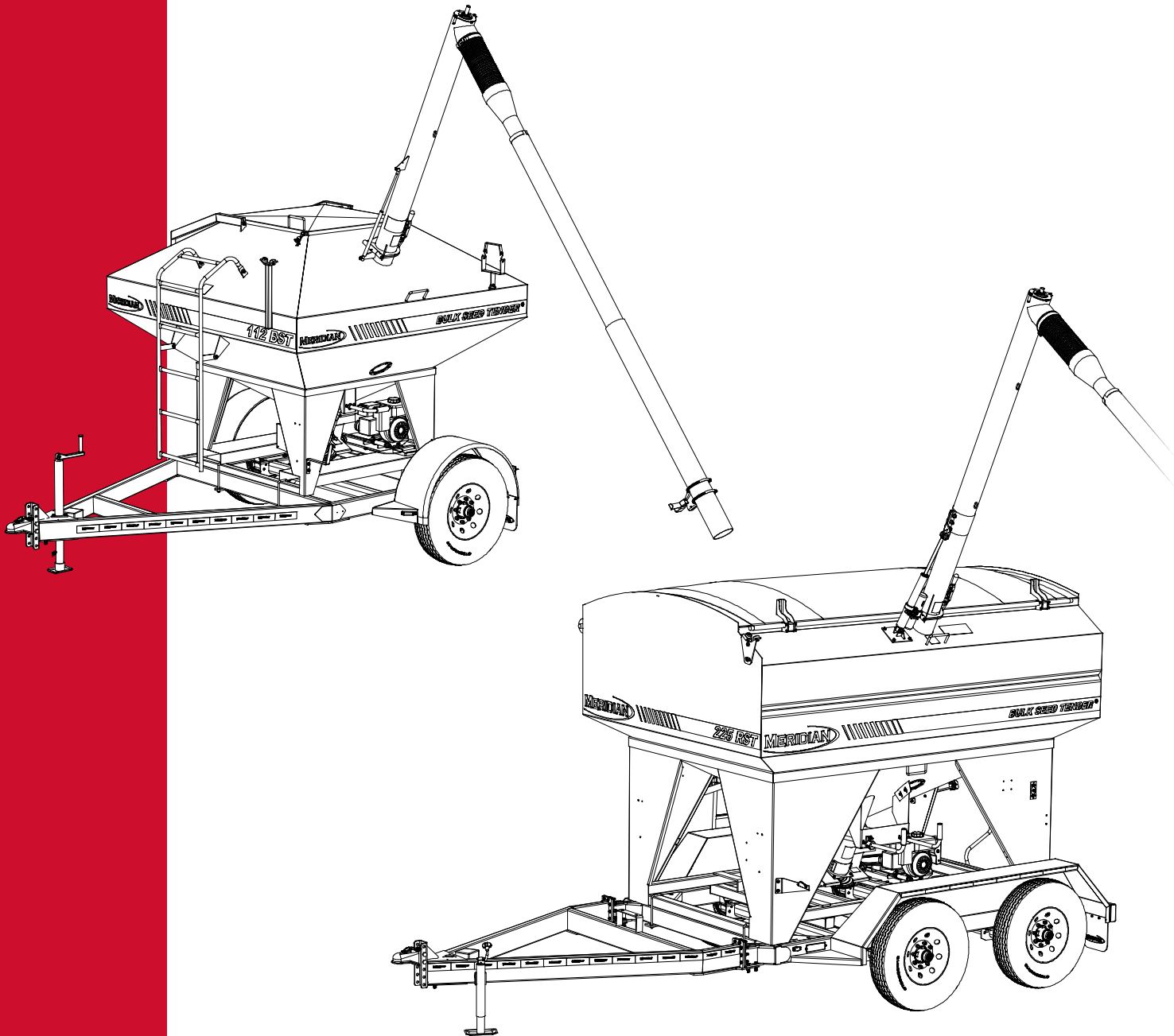


# MERIDIAN<sup>®</sup>

## 112 BST • 225 RST

BULK SEED TENDER<sup>®</sup>



## PARTS BOOK

This page intentionally left blank

## TABLE OF CONTENTS

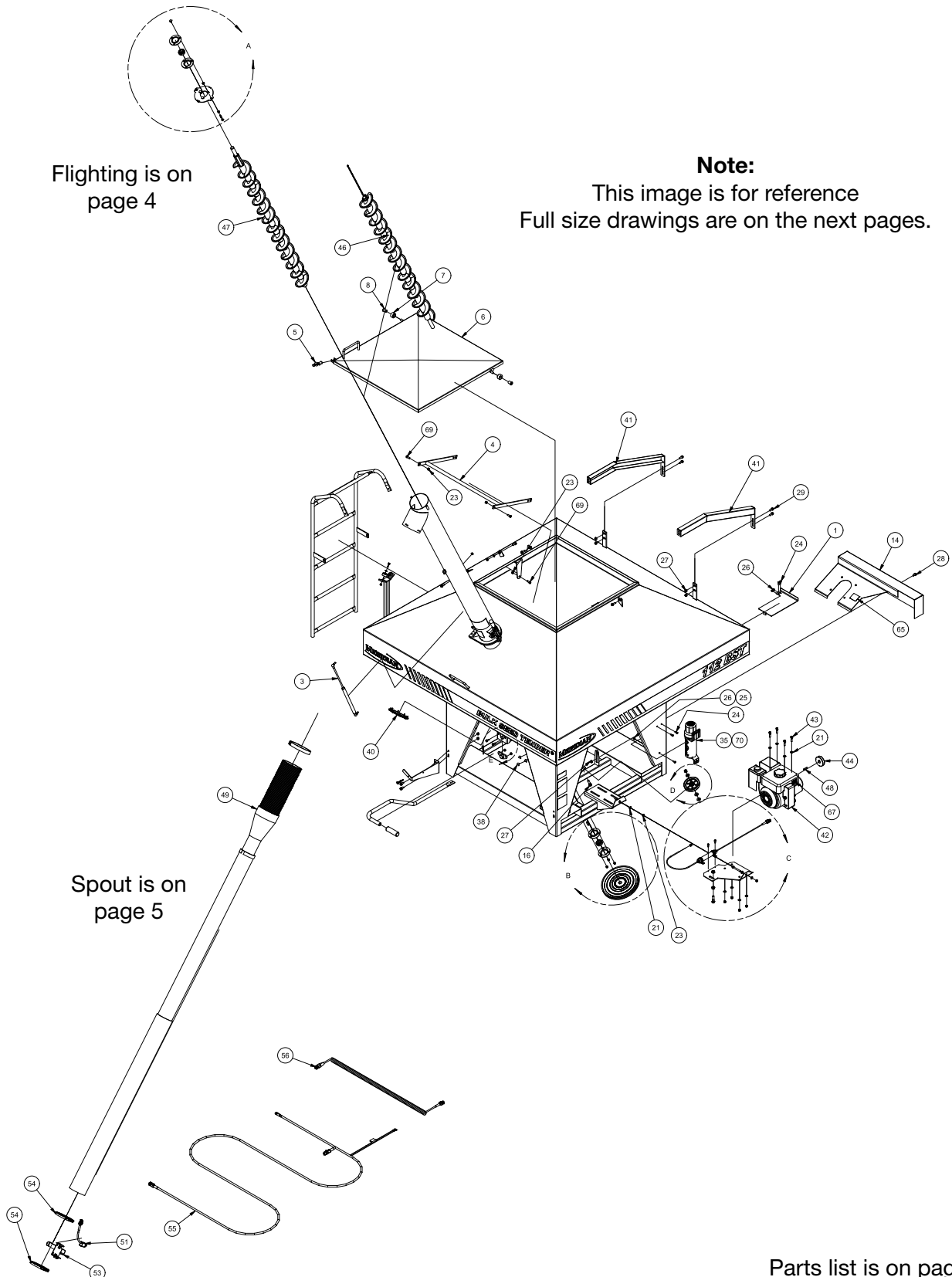
| <b>DESCRIPTION</b>                 | <b>PAGE</b> |
|------------------------------------|-------------|
| 112 BST SEED TENDER . . . . .      | 1           |
| 112 BST Upper Auger Tube . . . . . | 12          |
| 112 BST Lower Auger Tube . . . . . | 14          |
| Three Tier Spout . . . . .         | 15          |
| 112 BST TRAILER . . . . .          | 16          |
| 225 RST SEED TENDER . . . . .      | 20          |
| 225 RST Lower Auger Tube . . . . . | 27          |
| 225 RST Upper Auger Tube . . . . . | 28          |
| 225 RST TRAILER . . . . .          | 29          |
| 225 RST Bumper Hitch . . . . .     | 32          |
| 225 RST Gooseneck Hitch . . . . .  | 33          |
| Warranty Statement                 |             |

This page intentionally left blank

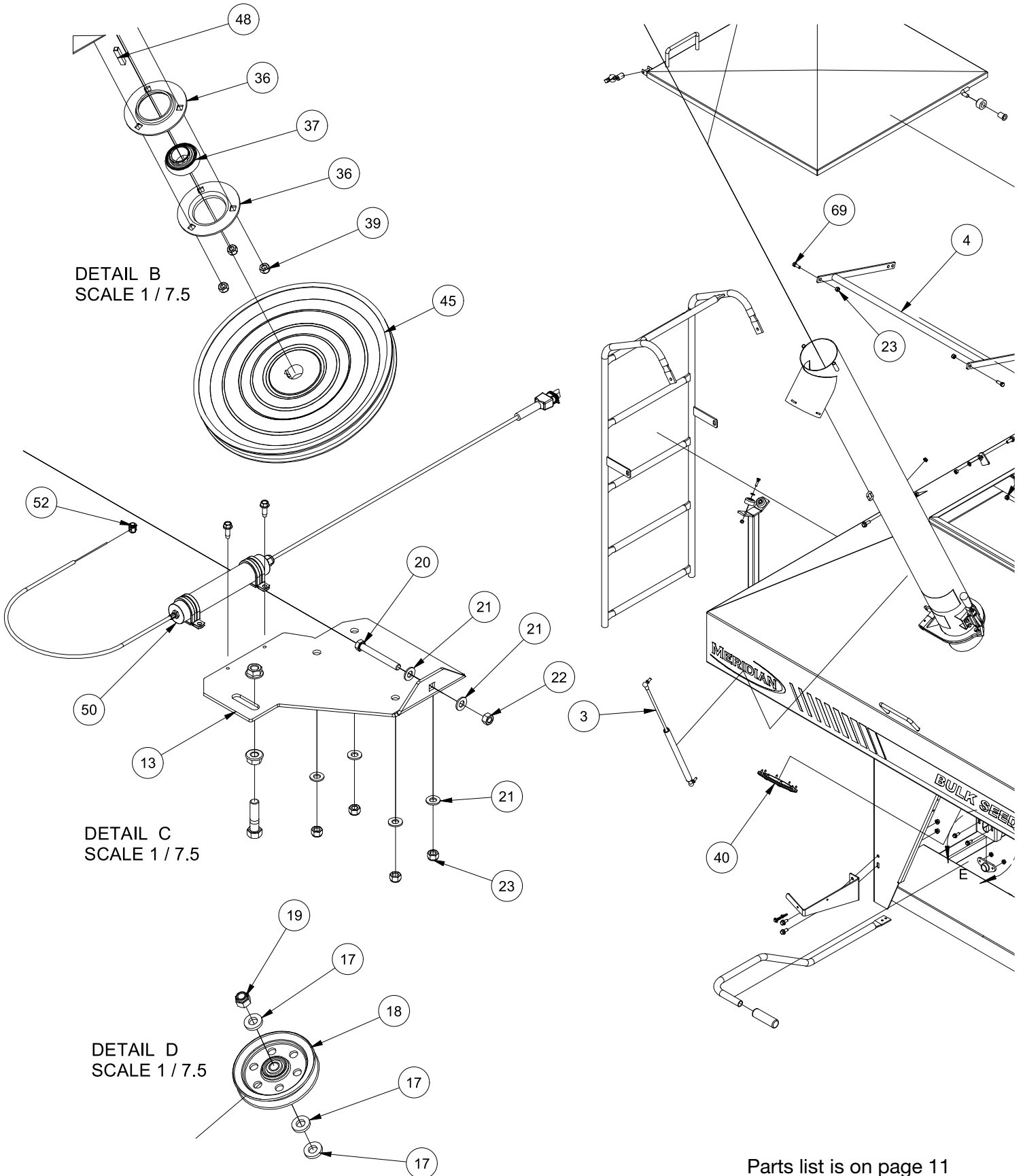
# 112 BST SEED TENDER

Flighting is on page 4

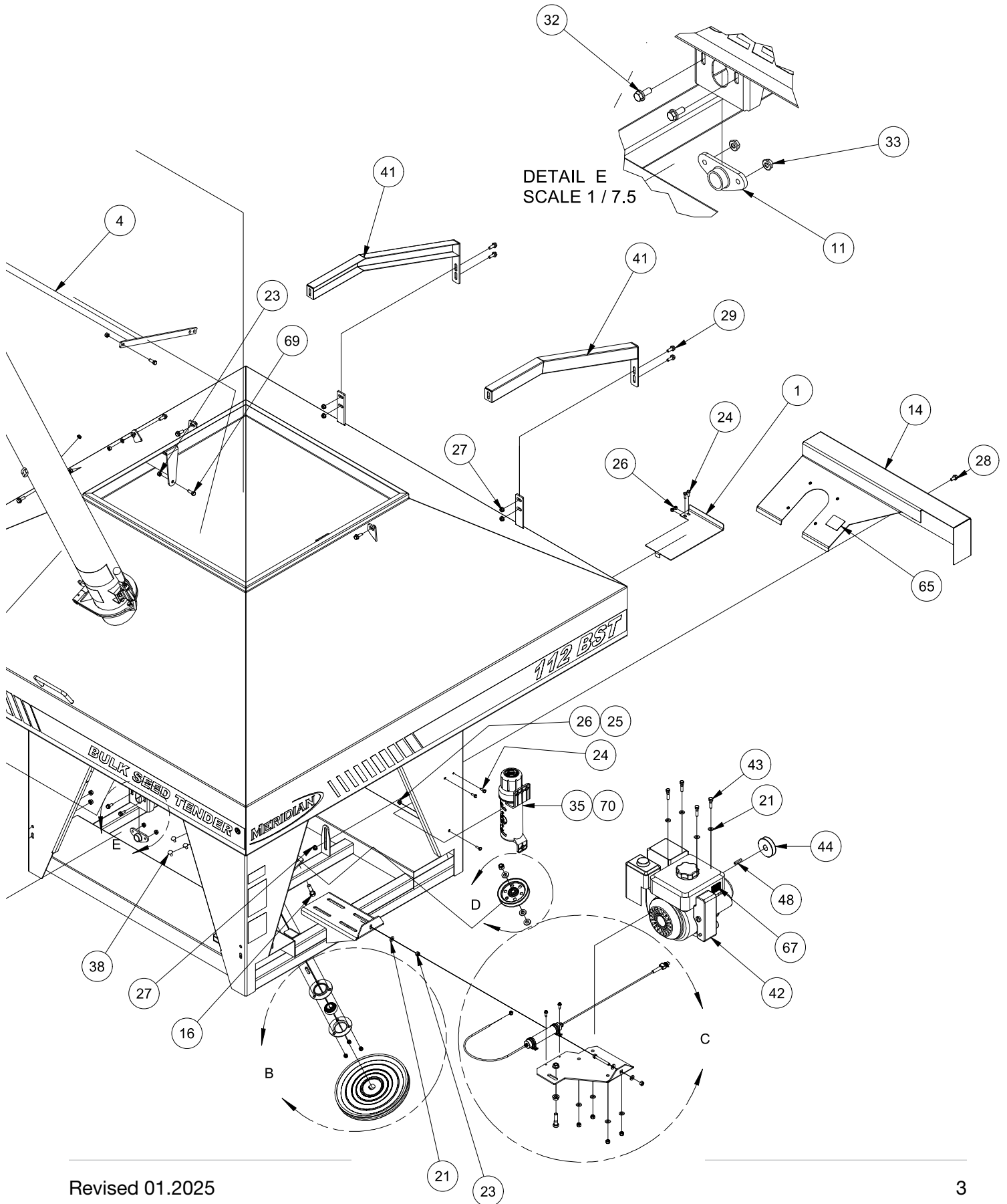
**Note:**  
This image is for reference  
Full size drawings are on the next pages.

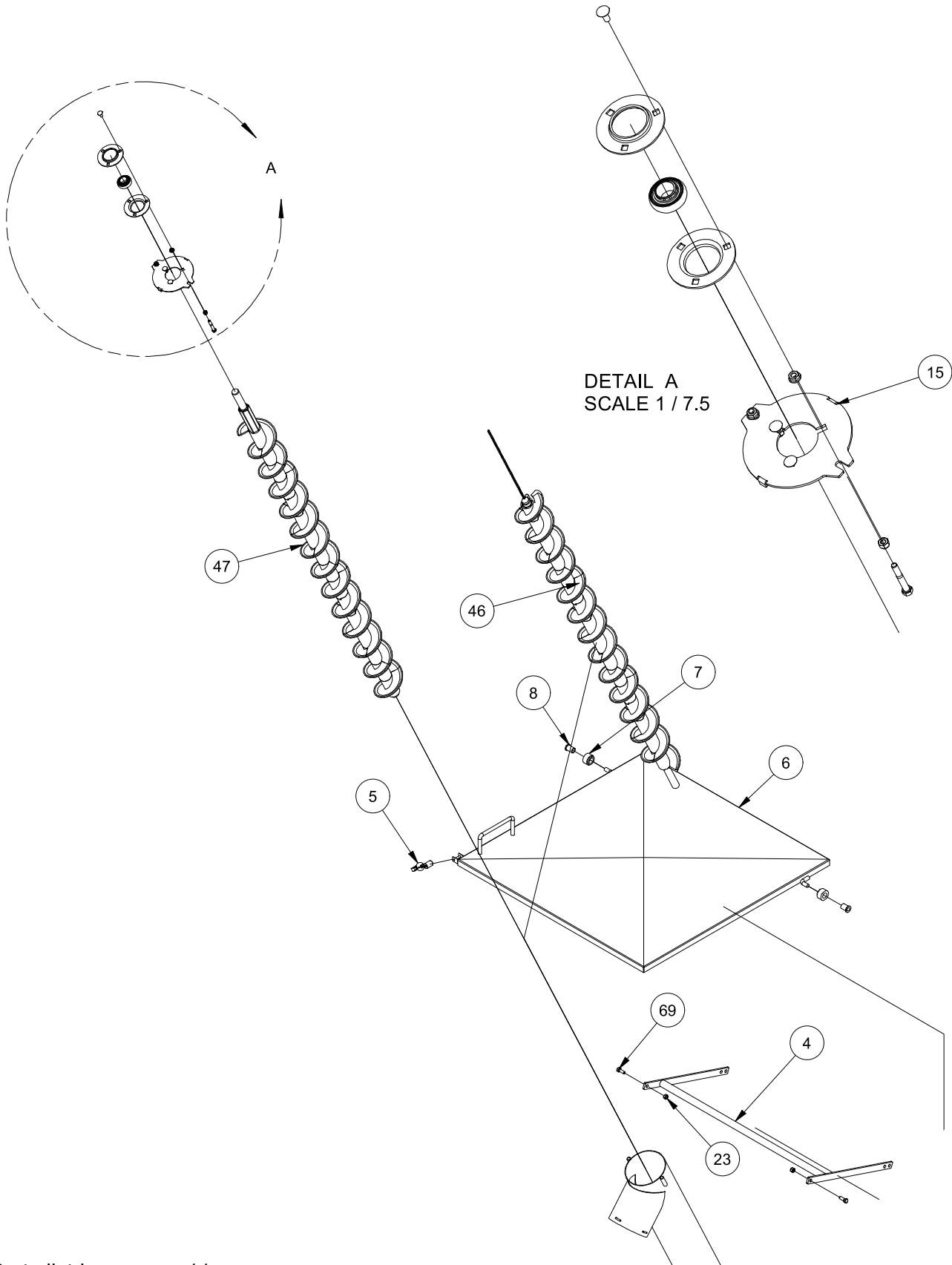


Parts list is on page 11

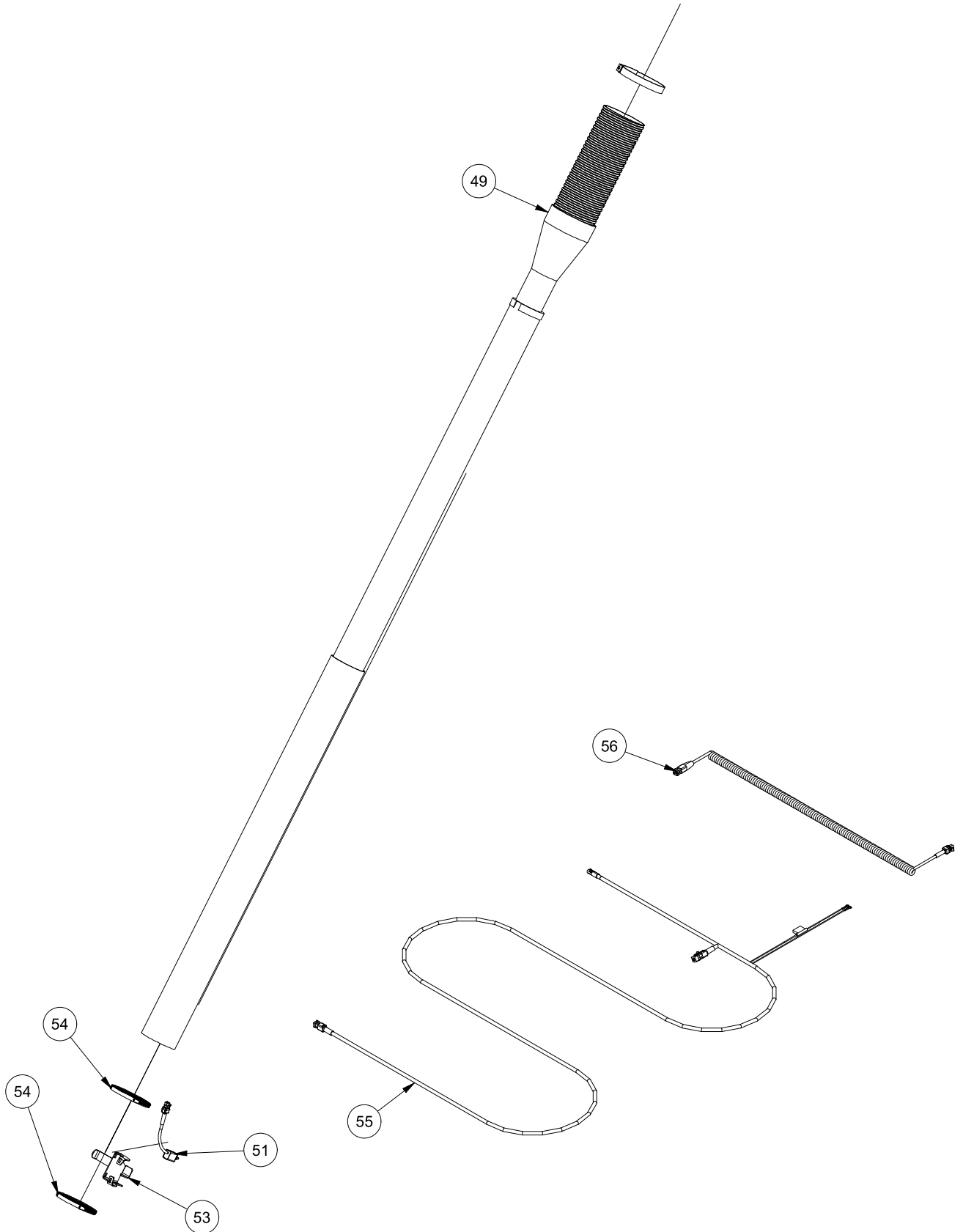


Parts list is on page 11

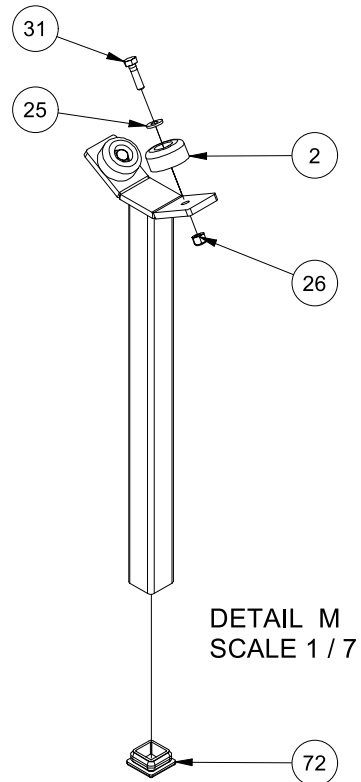
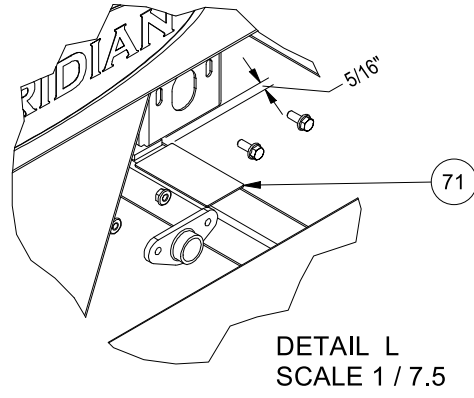
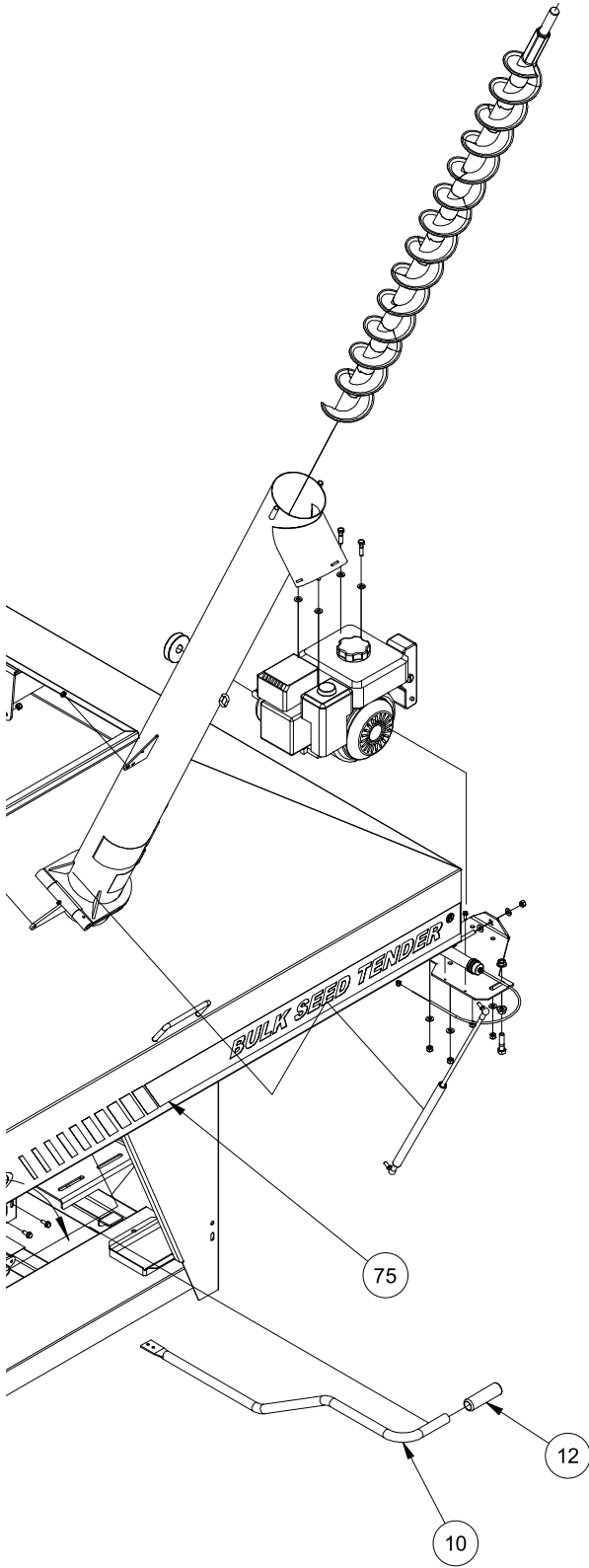


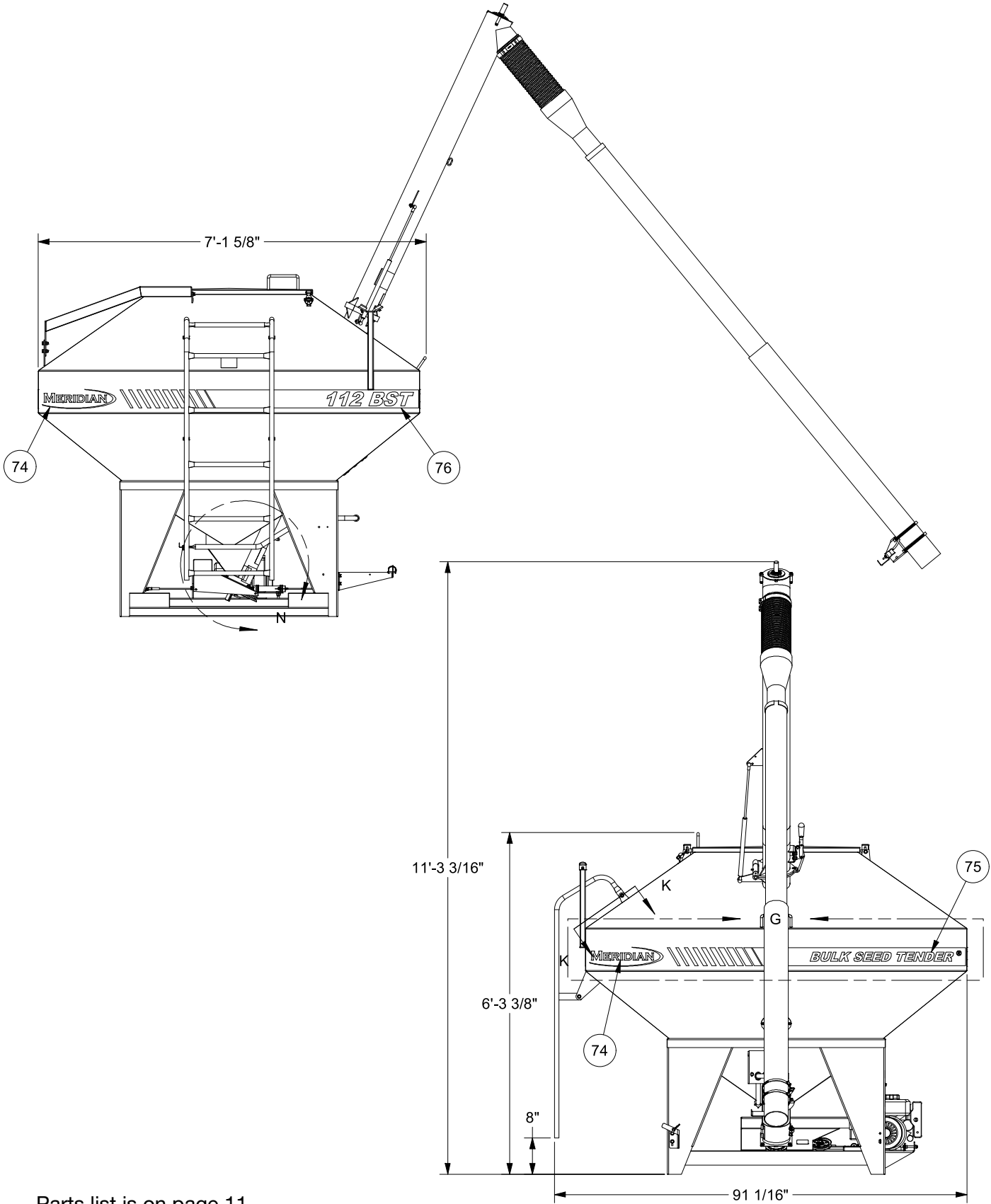


Parts list is on page 11

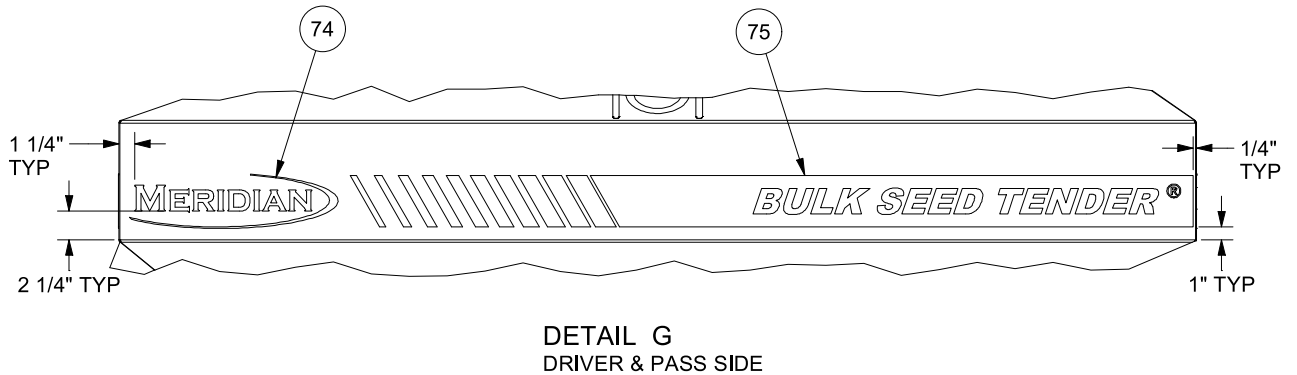
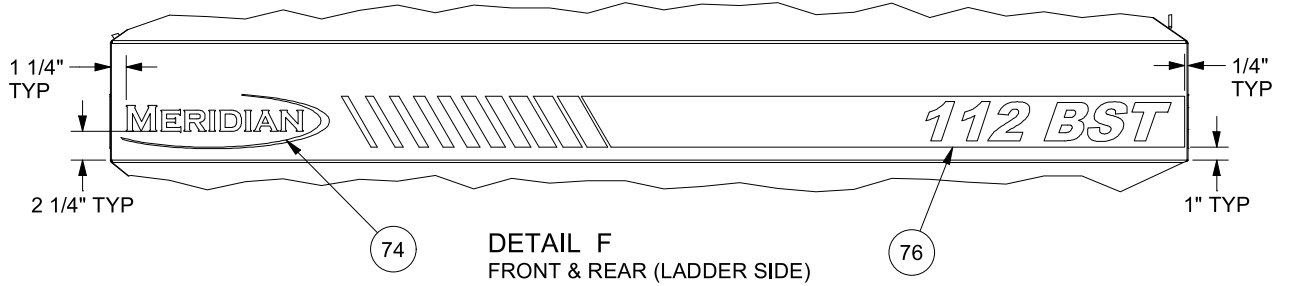
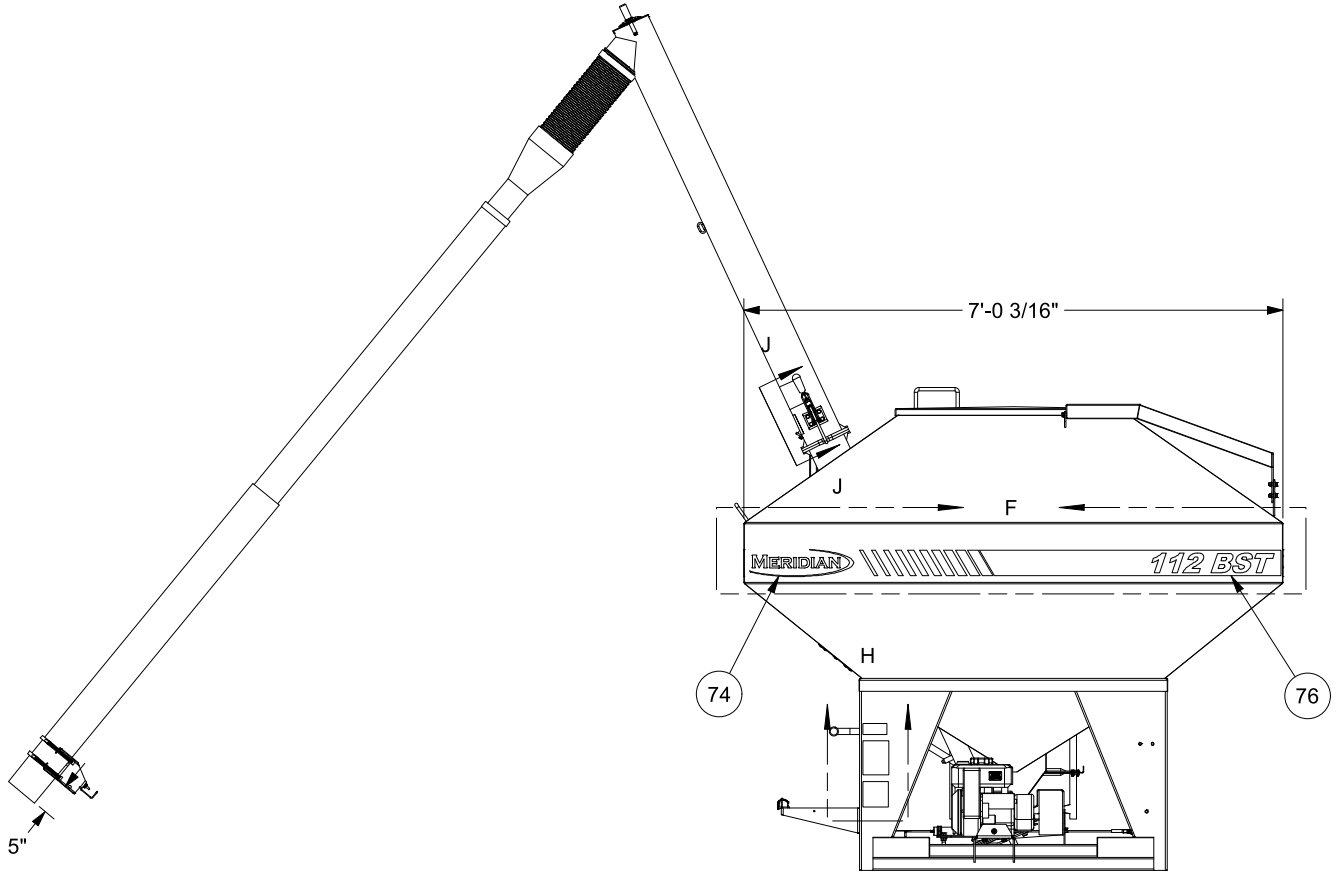


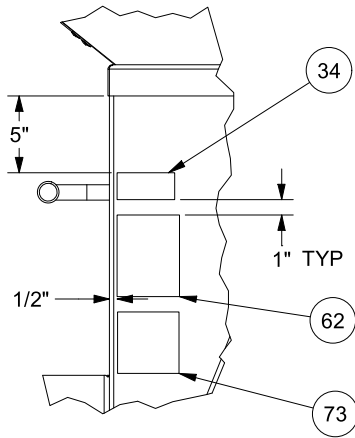




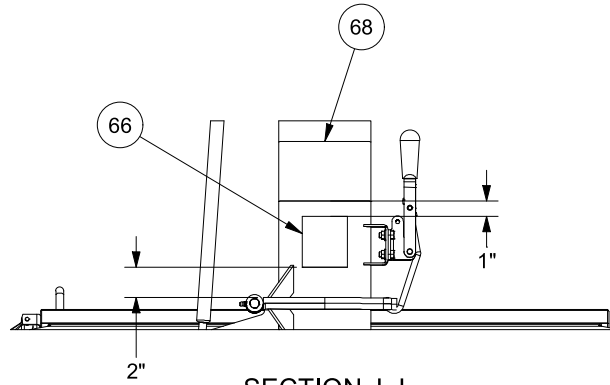


Parts list is on page 11

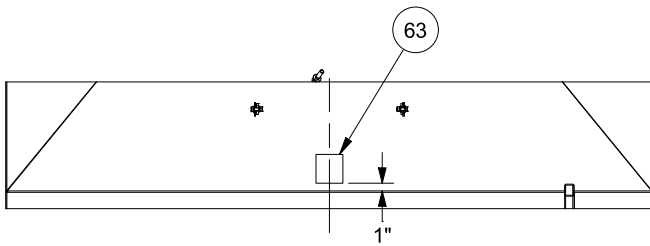




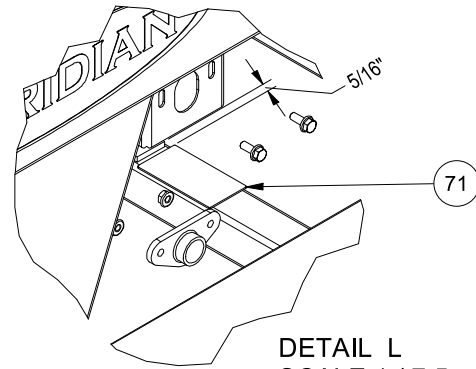
DETAIL H  
SCALE 1 / 12.5



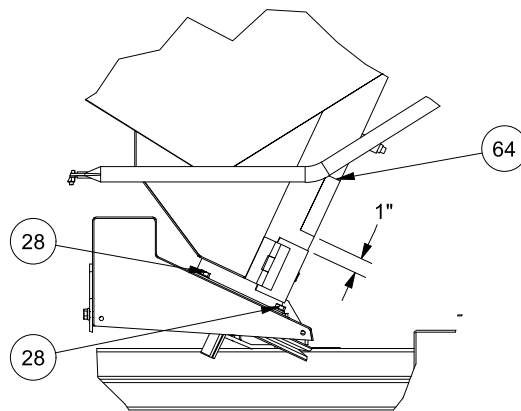
SECTION J-J  
SCALE 1 / 12.5



SECTION K-K  
SCALE 1 / 25



DETAIL L  
SCALE 1 / 7.5



DETAIL N  
SCALE 1 / 12.5

Parts list is on page 11

Table 1 - 112 BST Tender Base Model Assembly

| ITEM | QTY | PART #   | DESCRIPTION   |
|------|-----|----------|---|
| 1    | 1   | 21063-00 | GATE SLIDE  |
| 2    | 2   | 19133    | RUBBER BUMPER   |
| 3    | 1   | 21407-00 | 250 LB LIFT ASSIST SHOCK (1160N)                            |
| 4    | 1   | 35505-00 | SWING ARM ASSEMBLY  |
| 5    | 1   | 18111    | RUBBER LATCH  |
| 6    | 1   | 35502-00 | HOPPER LID ASSEMBLY   |
| 7    | 2   | 19401    | ROLLER SLEEVE   |
| 8    | 2   | 19402    | ROLLER INNER BUSHING  |
| 9    | 1   | 35503-00 | LADDER ASSEMBLY   |
| 10   | 1   | 21065-00 | SLIDE GATE HANDLE   |
| 11   | 1   | 19404    | BUSHING, NYLON 1 INCH                                       |
| 12   | 1   | 19447    | HANDLE GRIP   |
| 13   | 1   | 38511-00 | ACTUATOR BRACKET ASSEMBLY                                   |
| 14   | 1   | 36035-00 | DRIVE BELT GUARD ASSEMBLY                                   |
| 15   | 1   | 36033-00 | TOP PLATE BEARING ASSEMBLY                                  |
| 16   | 1   | 19356    | BOLT, HEX, 1/2-13 UNC X2                                    |
| 17   | 3   | 19372    | WASHER, FLAT 1/2  |
| 18   | 1   | 21253-00 | IDLER PULLEY Ø5" W/BEARING 1/2" BORE                        |
| 19   | 1   | 19127    | Ø1/2"-13 UNC HEX NYLON LOCKNUT                              |
| 20   | 1   | 19330    | BOLT HEX, 3/8"-16 X 3" UNC, ZINC PLTD, GRADE 5, FULL THREAD |
| 21   | 15  | 19348    | WASHER, FLAT 3/8  |
| 22   | 5   | 19343    | NUT, HEX 3/8-16 UNC   |
| 23   | 9   | 19347    | Ø3/8"-16 UNC NYLON LOCKNUT                                  |
| 24   | 5   | 19560    | BOLT, HEX, 1/4-20 UNC X0.75                                 |
| 25   | 5   | 19307    | WASHER, FLAT 1/4  |
| 26   | 7   | 19128    | Ø1/4"-20 UNC NYLON HEX NUT                                  |
| 27   | 9   | 19564    | NUT, HEX, FLANGED, 3/8-16 UNC                               |
| 28   | 7   | 19577    | BOLT, HEX, FLANGED, 3/8-16 UNC X 0.75                       |
| 29   | 10  | 19569    | BOLT, HEX, FLANGED, 3/8-16 UNC X 1                          |
| 30   | 4   | 19349    | Ø3/8" LOCK WASHER   |
| 31   | 2   | 19301    | BOLT, HEX, 1/4-20 UNC X1                                    |
| 32   | 2   | 19568    | BOLT, HEX, FLANGED, 5/16-18 UNC X 0.75                      |
| 33   | 4   | 19318    | NUT, HEX, FLANGED, 5/16-18 UNC                              |
| 34   | 1   | 19984    | SERIAL NUMBER DECAL   |
| 35   | 1   | 18128    | HOLDER FOR MANUAL OMC-1                                     |
| 36   | 2   | 21259-00 | 52MM BEARING FLANGE   |
| 37   | 1   | 21258-00 | BEARING   |
| 38   | 3   | 19315    | BOLT, CARRIAGE 5/16-18 UNC X 0.75                           |
| 39   | 3   | 19586    | Ø5/16"-18 UNC NYLON LOCK NUT                                |
| 40   | 1   | 47008    | VIEW GLASS, S.S. RING ASSM.                                 |

|    |   |            |   |
|----|---|------------|---|
| 41 | 1 | 35509-01   | LID TRACKS                                  |
| 42 | 1 | 21255      | GX160 HONDA ENGINE                          |
| 43 | 4 | 19327      | BOLT, HEX, 3/8-16 UNC X1.5                  |
| 44 | 1 | 21251-00   | 3.15 OD PULLY                               |
| 45 | 1 | 21323-00   | 12IN PULLEY                                 |
| 46 | 1 | 18713      | AUGER LOWER                                 |
| 47 | 1 | 18714      | AUGER, UPPER                                |
| 48 | 2 | 21261-00   | DRIVE KEY 1/4" X 1/4"                       |
| 49 | 1 | 38530-00   | SPOUT 6 IN 3 TIER                           |
| 50 | 1 | 17721      | ACTUATOR W/ CABLE & CLAMPS - RMC2500        |
| 51 | 1 | 14002      | ACTUATOR SWITCH ASSEMBLY                    |
| 52 | 1 | 21270-00   | THROTTLE CABLE WIRE HOLDER HONDA            |
| 53 | 1 | 21240-04   | THROTTLE HANDLE (6 1/4") BLACK              |
| 54 | 2 | 21433-00   | HOSE CLAMP - 6IN LIGHT DUTY                 |
| 55 | 1 | 36106-00   | WIRE HARNESS ACTUATOR LOWER                 |
| 56 | 1 | 38503-01   | 4FT CURLY CORD                              |
| 57 | 1 | 40616      | 112 BST TENDER BODY, PAINTED                |
| 58 | 1 | 14022      | OIL MOTOR 10W-30                            |
| 59 | 1 | 18657      | CABLE BATTERY SET 450M OAL                  |
| 60 | 1 | 21114      | BELT DRIVE BB68                             |
| 61 | 1 | 50169      | SWITCH, BATTERY, TOP MOUNT ASSEMBLY         |
| 62 | 1 | 19934      | DECAL CAUTION READ MANUAL                   |
| 63 | 1 | 19939      | FALLING HAZARD DECAL                        |
| 64 | 1 | 19936      | ROTATING PART HAZARD                        |
| 65 | 1 | 19937      | DECAL WARNING MISSING SHIELD                |
| 66 | 1 | 19935      | PINCH POINT HAZARD DECAL                    |
| 67 | 1 | 19991      | DECAL RECHARGE BATTERY                      |
| 68 | 1 | 17509      | CRUSH - ELECTROCUTION HAZARD DECAL          |
| 69 | 4 | 19325      | BOLT, HEX, 3/8-16 UNC X1                    |
| 70 | 1 | 10995      | OPERATOR'S MANUAL                           |
| 71 | 1 | 18435      | ENTANGLEMENT HAZARD DECAL                   |
| 72 | 1 | 2115000001 | PLASTIC PLUG - SQUARE RIBBED - 1 1/4" BLACK |
| 73 | 1 | 10479      | DECAL BUILT IN AMERICA 4"                   |
| 74 | 4 | 17728      | MERIDIAN TRAILER BLACK DECAL                |
| 75 | 2 | 12084      | DECAL BULK SEED TENDER BLACK STRIPE 112BST  |
| 76 | 2 | 12085      | DECAL 112BST BLACK STRIPE                   |
| 77 | 1 | 21110-01   | FLEX SPOUT HANGER BRACKET                   |
| 78 | 1 | 19693      | PIN, SNAP, ZINC 1/4" X 1 3/8"               |

### 112 BST UPPER AUGER TUBE

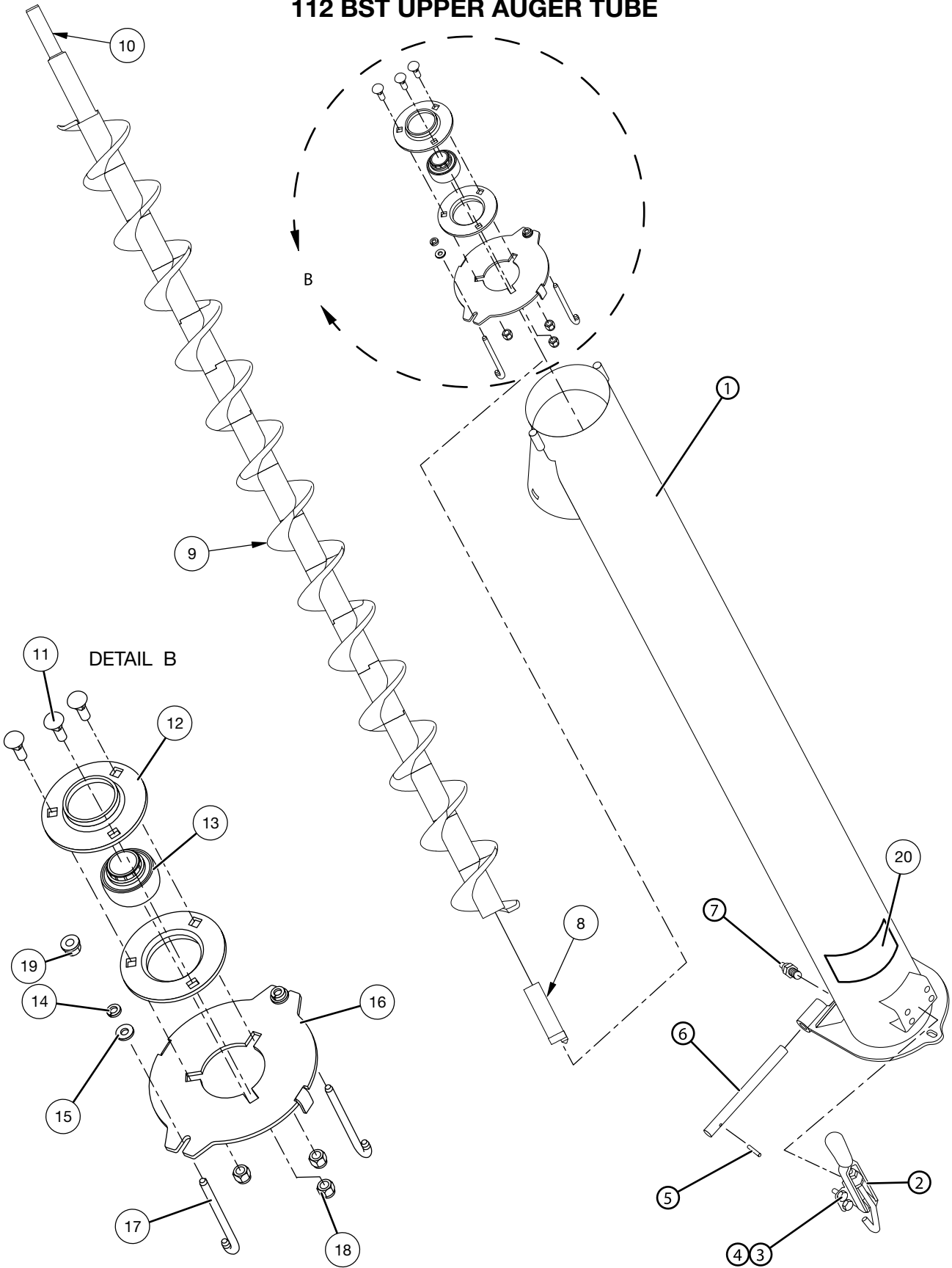


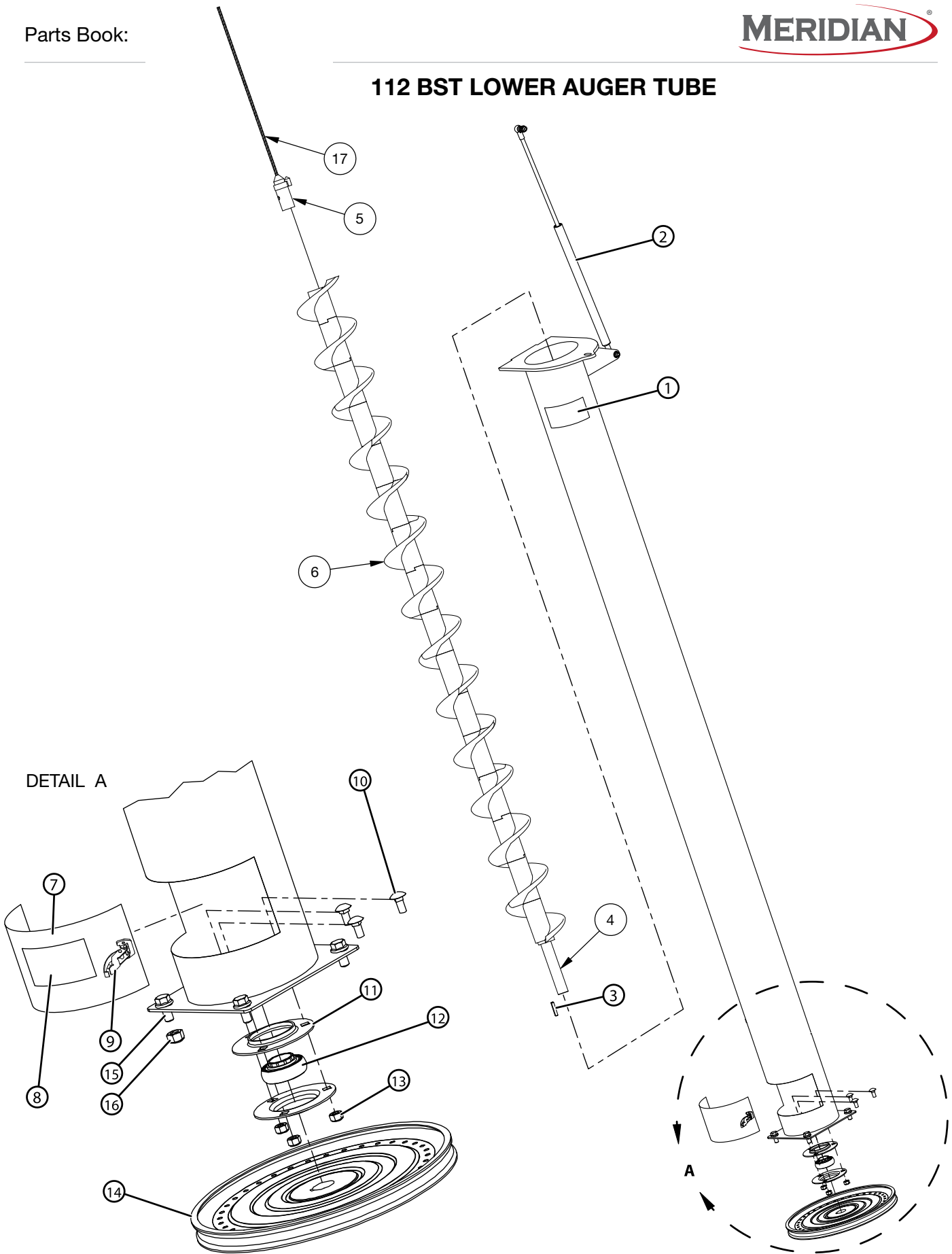
Table 2 - 112 BST Upper Auger Tube

| ITEM | QTY | PART #   | DESCRIPTION                        |
|------|-----|----------|------------------------------------|
| 1    | 1   | 36003    | TUBE, FOLD OVER AUGER ASSEMBLY     |
| 2    | 1   | 19123    | LATCH, FOLD OVER AUGER             |
| 3    | 4   | 19309    | BOLT, HEX, 5/16-18 X 3/4"          |
| 4    | 4   | 19318    | NUT, HEX, FLANGED, 5/6-18          |
| 5    | 1   | 19284    | PIN, SPRING, 3/16" X 1-1/8"        |
| 6    | 1   | 21223-00 | PIN, HINGE                         |
| 7    | 1   | 19283    | ZERK, GREASE                       |
| 8    | 1   | 10241    | FEMALE FOLDING DRIVE CONNECTOR FEM |
| 9    | 1   | 18714    | AUGER, TOP ASSEMBLY                |
| 10   | 1   | 21453-00 | SHAFT, AUGER TAIL                  |
| 11   | 1   | 19315    | BOLT, CARRIAGE, 5/16-18 X 3/4"     |
| 12   | 2   | 21259-00 | FLANGE, BEARING 52 MM ZINC         |
| 13   | 1   | 21258-00 | BEARING                            |
| 14   | 2   | 19308    | WASHER, LOCK, 1/4"                 |
| 15   | 2   | 19307    | WASHER, FLAT, 1/4"                 |
| 16   | 1   | 21222-03 | CAP, 6" TOP BEARING                |
| 17   | 2   | 19582    | J-BOLT, 1/4-20 X 1-1/2"            |
| 18   | 3   | 19586    | NUT, LOCK, 5/16-18 NYLON           |
| 19   | 2   | 19305    | NUT, HEX, 1/4-20                   |
| 20   | 1   | 17509    | DECAL, DANGER, ELECTROCUTION       |

Table 3 - 112 BST Lower Auger Tube

| ITEM | QTY | PART #   | DESCRIPTION                          |
|------|-----|----------|--------------------------------------|
| 1    | 1   | 19935    | DECAL, WARNING, PINCH POINT          |
| 2    | 1   | 21407-00 | SHOCK, LIFT ASSIST (250 LB CAPACITY) |
| 3    | 1   | 21261-00 | KEY, DRIVE                           |
| 4    | 1   | 21452-00 | SHAFT, BOTTOM AUGER DRIVE            |
| 5    | 1   | 10241    | MALE FOLDING DR. CONNECTOR W/CABLE   |
| 6    | 1   | 18713    | FLIGHTING, BOTTOM AUGER ASSEMBLY     |
| 7    | 1   | 36504    | DOOR, CLEAN OUT                      |
| 8    | 1   | 19936    | DECAL, WARNING, ENTANGLEMENT HAZARD  |
| 9    | 1   | 21257-00 | LATCH ASSEMBLY                       |
| 10   | 3   | 19315    | BOLT, CARRIAGE, 5/16-18 X 3/4"       |
| 11   | 2   | 21259-00 | FLANGE, BEARING 52 MM ZINC           |
| 12   | 1   | 21258-00 | BEARING                              |
| 13   | 3   | 19586    | NUT, LOCK, 5/16-18 NYLON             |
| 14   | 1   | 21323-00 | PULLEY, 12"                          |
| 15   | 4   | 19309    | BOLT, HEX, 5/16-18 X 3/4"            |
| 16   | 4   | 19318    | NUT, FLANGED, 5/16-18                |
| 17   | 1   | 21445-00 | CABLE, AUGER ALIGNMENT               |

### 112 BST LOWER AUGER TUBE



### THREE TIER SPOUT

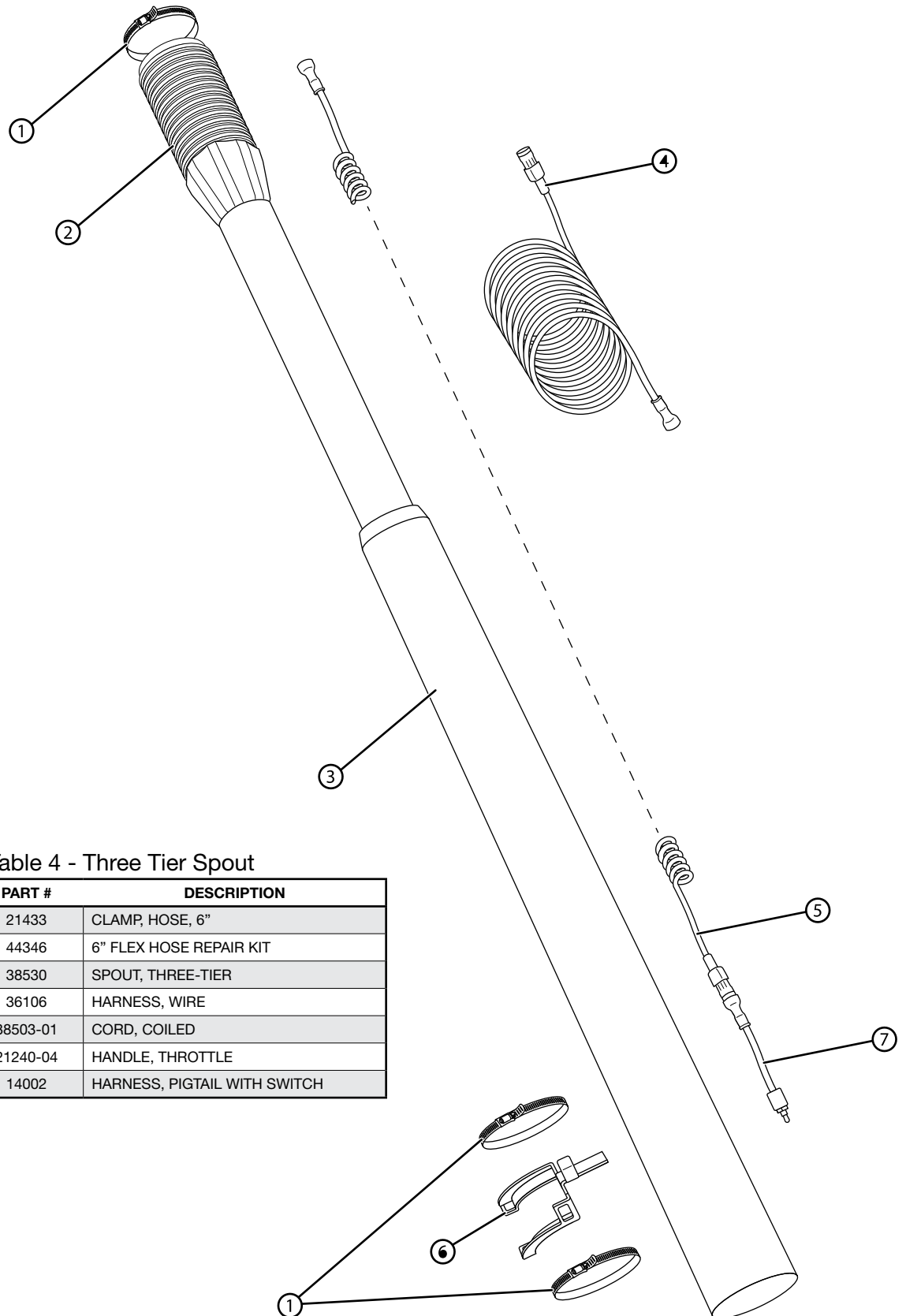


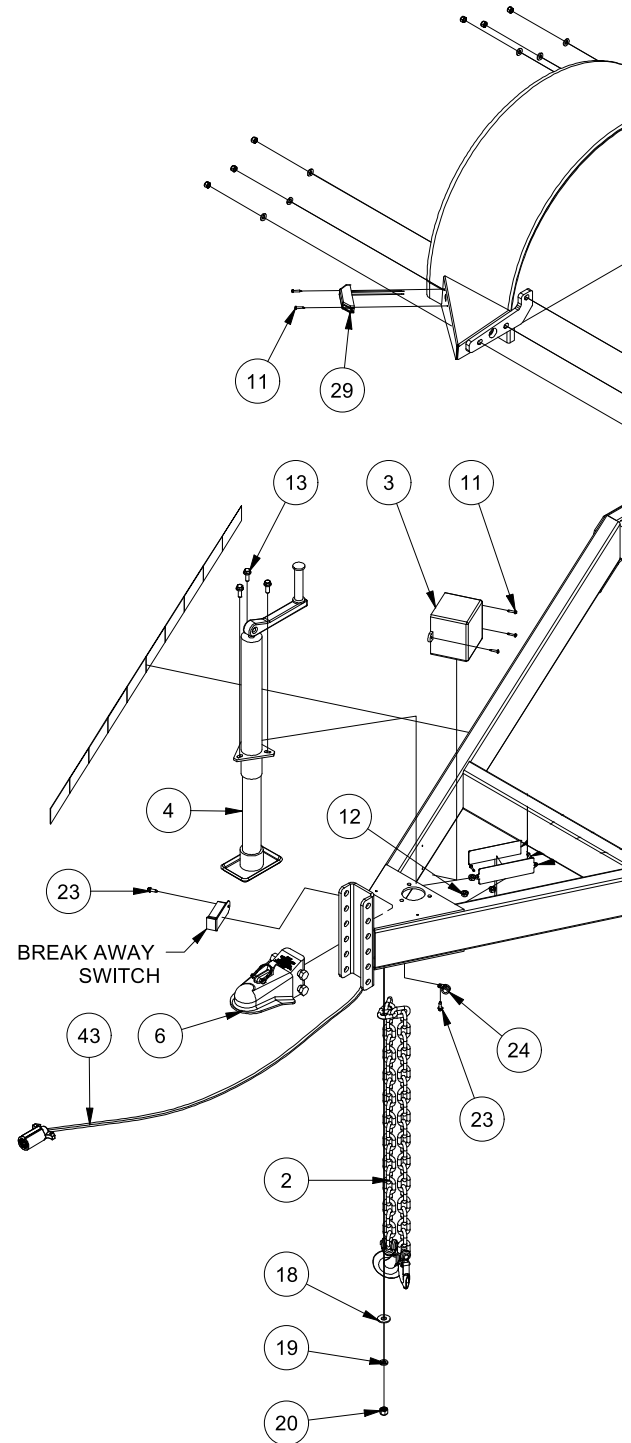
Table 4 - Three Tier Spout

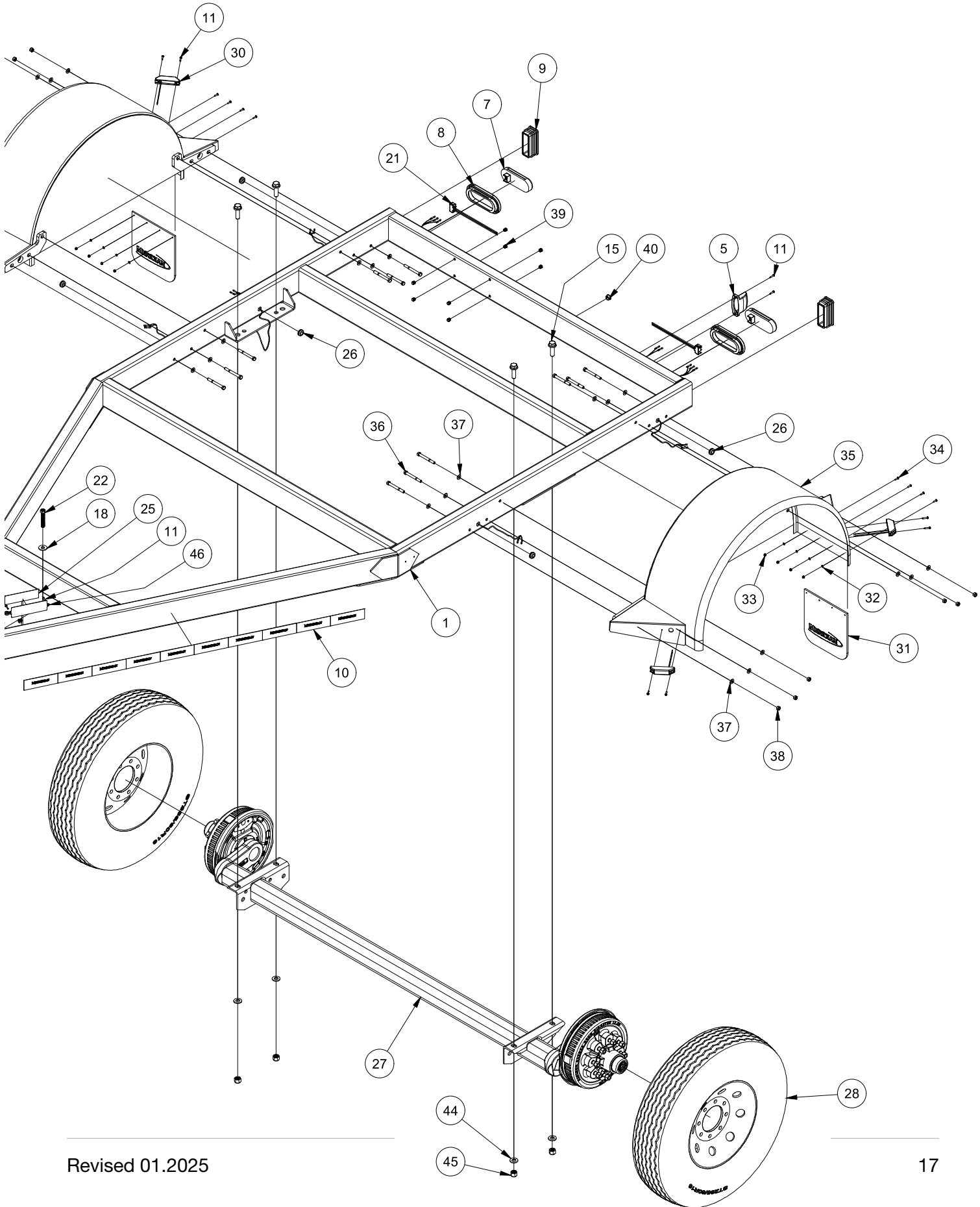
| ITEM | QTY | PART #   | DESCRIPTION                  |
|------|-----|----------|------------------------------|
| 1    | 3   | 21433    | CLAMP, HOSE, 6"              |
| 2    | 1   | 44346    | 6" FLEX HOSE REPAIR KIT      |
| 3    | 1   | 38530    | SPOUT, THREE-TIER            |
| 4    | 1   | 36106    | HARNESS, WIRE                |
| 5    | 1   | 38503-01 | CORD, COILED                 |
| 6    | 1   | 21240-04 | HANDLE, THROTTLE             |
| 7    | 1   | 14002    | HARNESS, PIGTAIL WITH SWITCH |

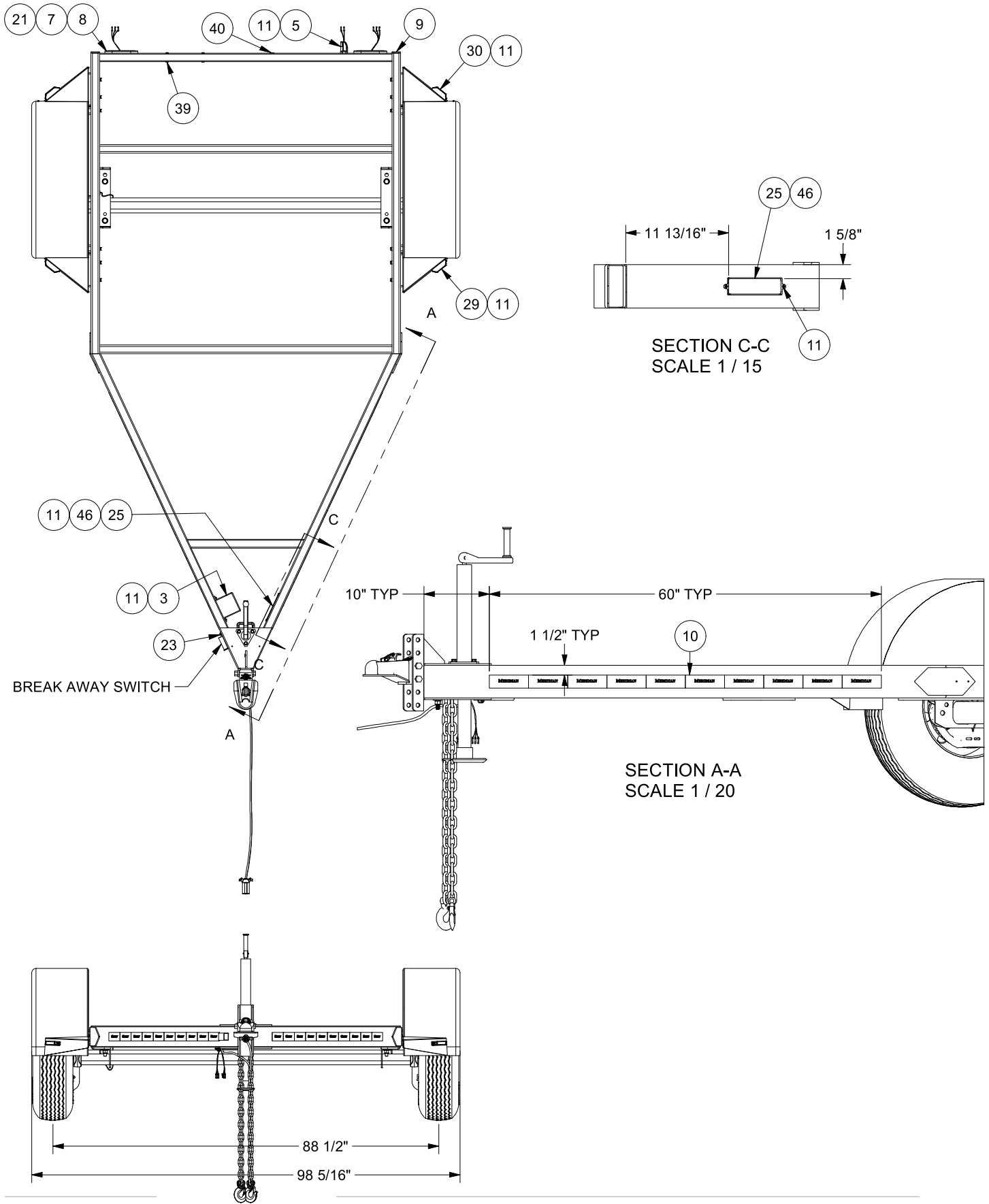
# 112 BST TRAILER

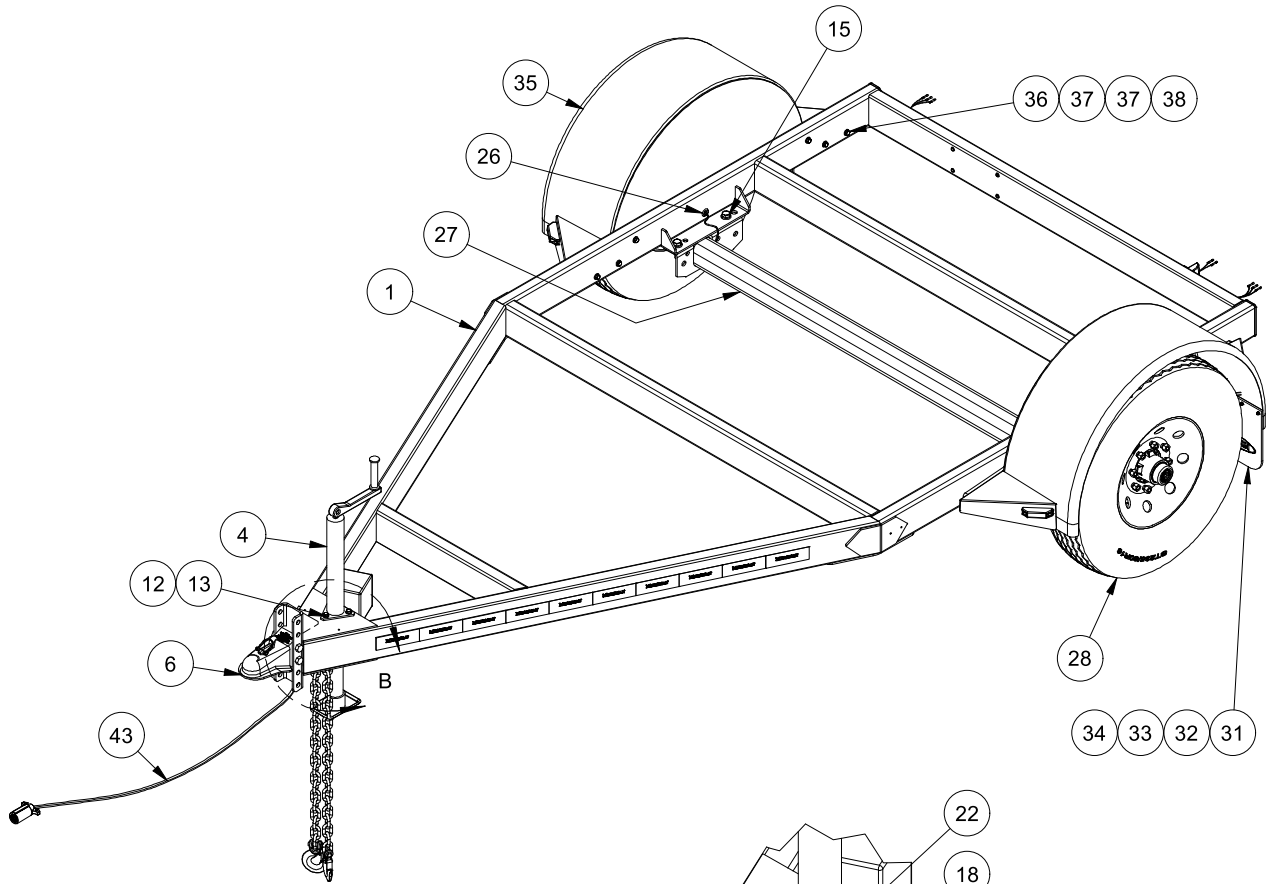
Table 5 - 112 BST Trailer Assembly

| ITEM | QTY   | PART # | DESCRIPTION   |
|------|-------|--------|---|
| 1    | 1     | 40617  | 112 TRAILER FRAME, PAINTED                                |
| 2    | 2     | 19171  | 3/8" X 35", GRADE 70 SAFETY CHAIN (26400# CAPACITY)       |
| 3    | 1     | 19275  | BATTERY BREAKAWAY BA10-150                                |
| 4    | 1     | 18192  | TOP WIND A-FRAME JACK (5000 LB CAP)                       |
| 5    | 1     | 17674  | LIGHT, LICENSE PLATE, SAE L 02, KAPER II                  |
| 6    | 1     | 24688  | COUPLER HITCH ASSM. 2 5/16" W/SFTY PIN                    |
| 7    | 2     | 17670  | TAIL LIGHT LED OVAL RED (TRUCK-LITE 6050)                 |
| 8    | 2     | 17671  | GROMMET TAIL LIGHT (TRUCK-LITE 60700)                     |
| 9    | 2     | 19619  | 5" X 2" TUBE PLUG   |
| 10   | 10 FT | 18096  | TAPE REFLECTIVE MERIDIAN 2X6X6                            |
| 11   | 15    | 19779  | #8-18 X 3/4" SELF DRILLING ZINC SCREW                     |
| 12   | 3     | 19564  | NUT, HEX, FLANGED, 3/8-16 UNC                             |
| 13   | 3     | 19569  | BOLT, HEX, FLANGED, 3/8-16 UNC X 1                        |
| 15   | 4     | 19567  | BOLT, HEX, FLANGED, 5/8-11 UNC X 2 GRADE 8                |
| 18   | 2     | 18487  | WASHER, 1/2" - WIDE - TYPE A STEEL, MILD                  |
| 19   | 1     | 19373  | Ø1/2" LOCK WASHER   |
| 20   | 1     | 17234  | NYLON LOCK NUT, 1/2"-13, GRADE 8, ZINC                    |
| 21   | 2     | 10045  | PLUG, S/T/T, 11" (TRUCK-LITE 94993-3)                     |
| 22   | 1     | 10278  | BOLT HEX 1/2"-13 FULL X 3" L GRADE 5 ZINC                 |
| 23   | 2     | 19597  | Ø1/4"-14 X 3/4" HEX WASHER HEAD SELF DRILLING SCREW       |
| 24   | 1     | 18679  | CLAMP CUSHIONED LOOP (1/2")                               |
| 25   | 1     | 17532  | DECAL, TRAILER VIN# TEMPLATE                              |
| 26   | 5     | 14021  | GROMMET 1/2" ID X 1-1/16" OD FOR 3/16" WALL X 13/16" HOLE |
| 27   | 1     | 18193  | 7000 LBS AXLE, 89.125" HUB FACE, 9" HOLES                 |
| 28   | 2     | 18131  | ST235/80R16-E TIRE, STEEL RIM ASSEMBLY                    |
| 29   | 2     | 17668  | YELLOW CLEARANCE LIGHT LED (TRUCK-LITE 3550A)             |
| 30   | 2     | 17669  | RED CLEARANCE LIGHT LED (TRUCK-LITE 3550)                 |
| 31   | 2     | 19274  | MUD FLAP, 10"X10"X1/4" THK, W/MERIDIAN LOGO               |
| 32   | 8     | 19629  | WASHER, FLAT, #8  |
| 33   | 8     | 19112  | #8-32 UNC HEX NYLON NUT                                   |
| 34   | 8     | 19141  | SCREW #8-32 UNF X 5/8 ROUND HEAD PAN                      |
| 35   | 2     | 40618  | FENDER, PAINTED, 112 TRAILER                              |
| 36   | 12    | 19331  | BOLT, HEX, 3/8-16 UNC X3.5                                |
| 37   | 24    | 19348  | WASHER, FLAT 3/8  |
| 38   | 12    | 19347  | Ø3/8"-16 UNC NYLON LOCKNUT                                |
| 39   | 8     | 17255  | PLUG TUBE ROUND Ø1/2" (16-20GA) (.065"-.035")             |
| 40   | 1     | 10275  | PLUG RD NYLON Ø3/4" HOLE 0.016"-0.125" SHEET              |
| 41   | 9 FT  | 17019  | 1/2" HEAT SHRINK POLYOLEFIN BLACK 2:1 WAYTECH 22438C      |
| 42   | 15 FT | 19136  | LOOM 1/2" SPLIT LCP-500-1100                              |
| 43   | 1     | 10469  | WIRE HARNESS, 112 BST TRAILER                             |
| 44   | 4     | 10283  | 5/8" FLAT WASHER GR. 8                                    |
| 45   | 4     | 10285  | 5/8-11 UNC LOCKNUT GR. 8                                  |
| 46   | 1     | 55206  | VIN TAG MOUNT PLATE STAINLESS                             |

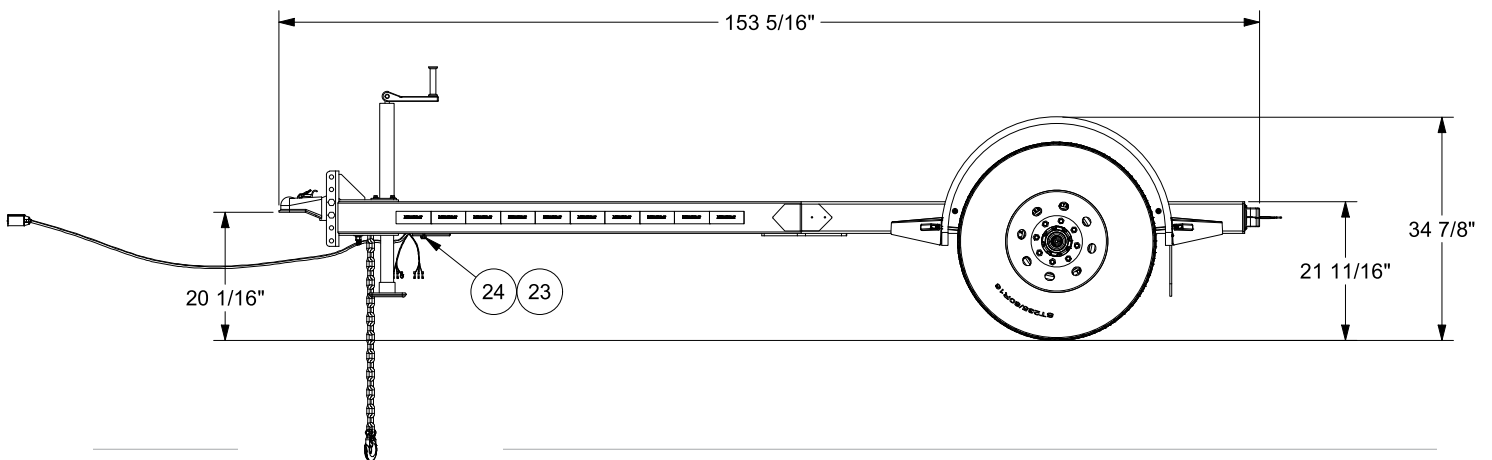
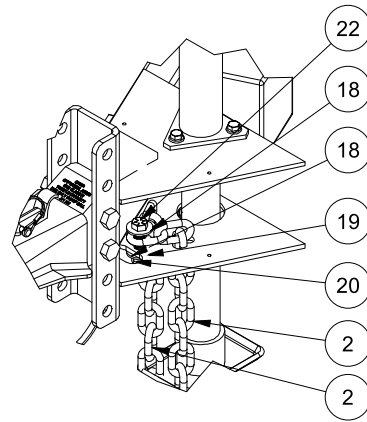




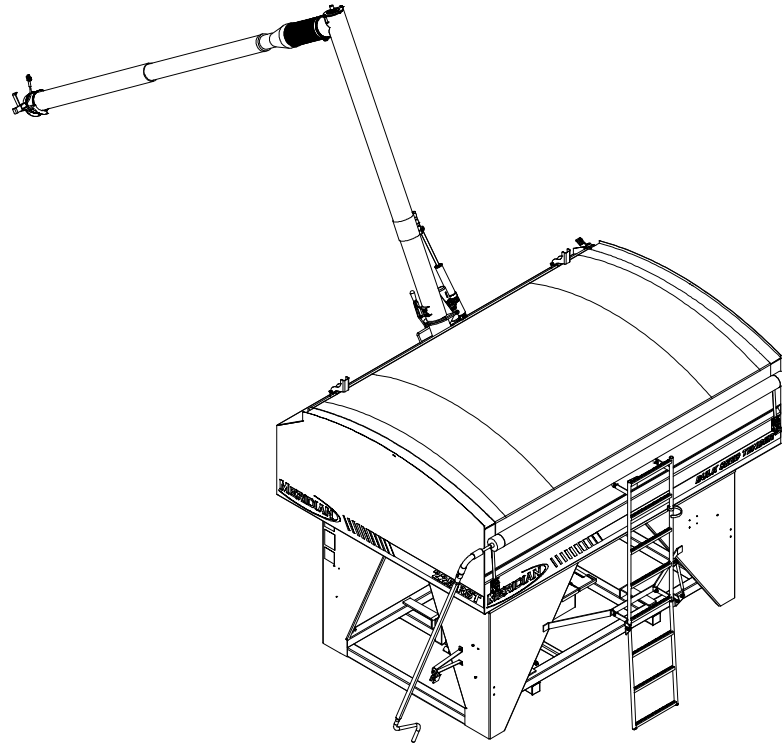




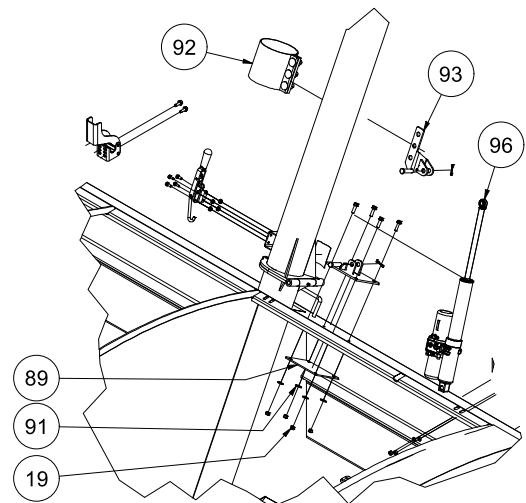
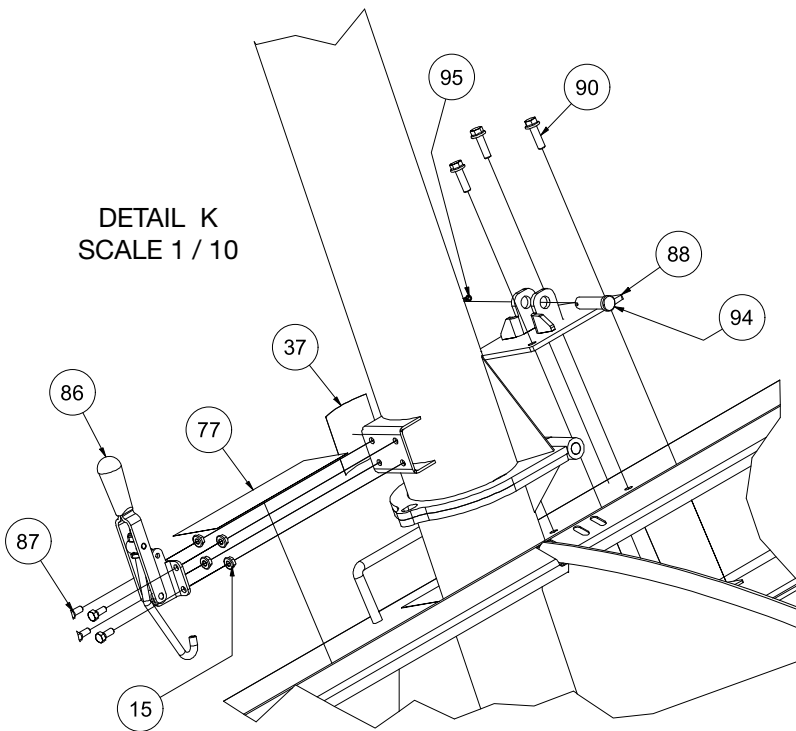
DETAIL B  
SCALE 1/ 10  
PARTS HIDDEN FOR CLARITY



# 225 RST SEED TENDER

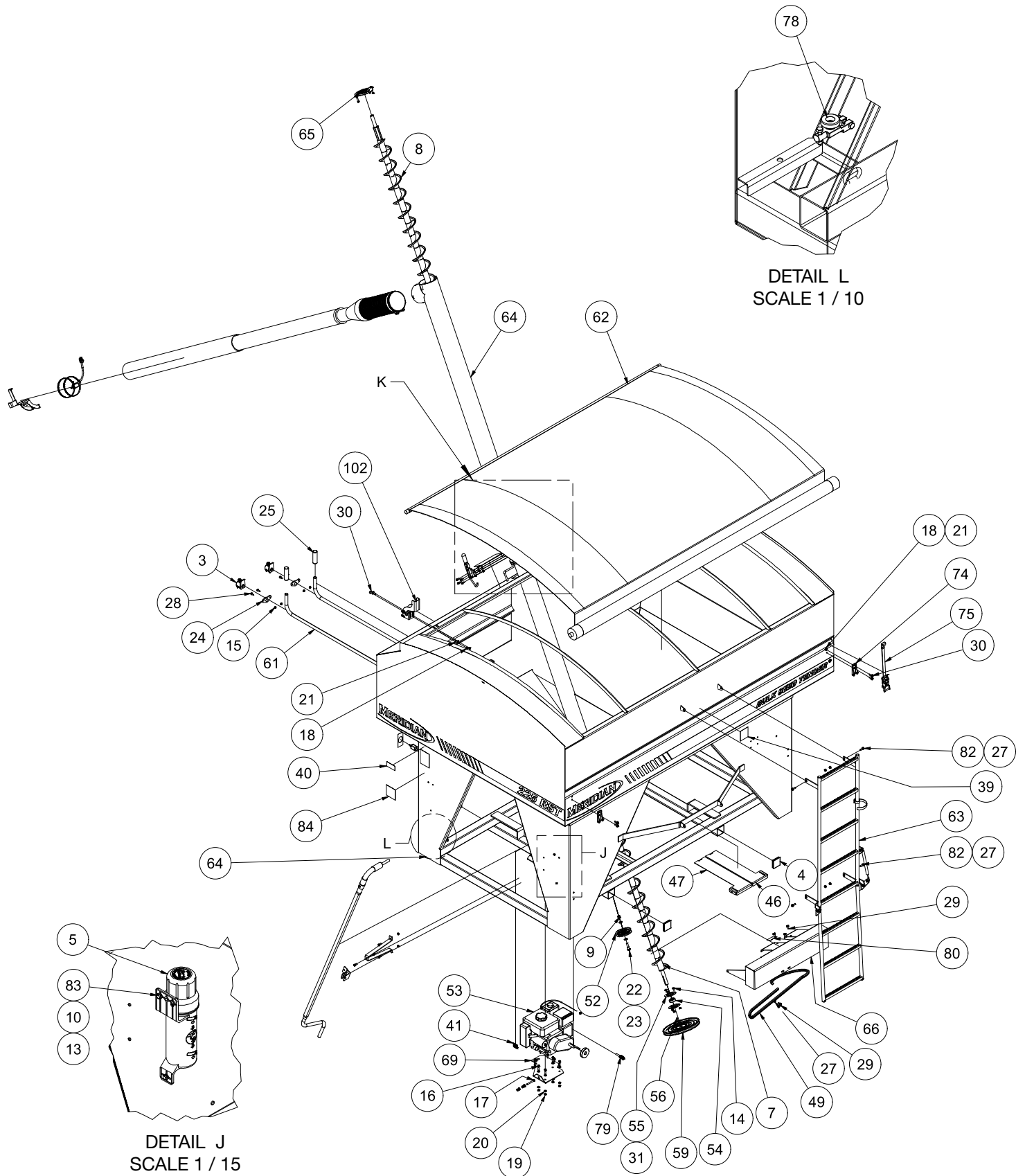


DETAIL K  
SCALE 1 / 10

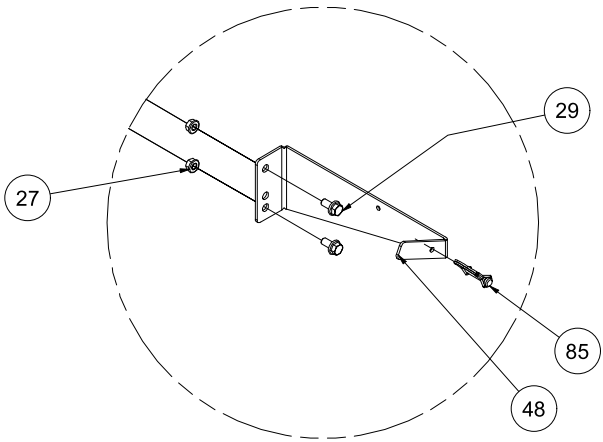


DETAIL K  
SCALE 1 / 30

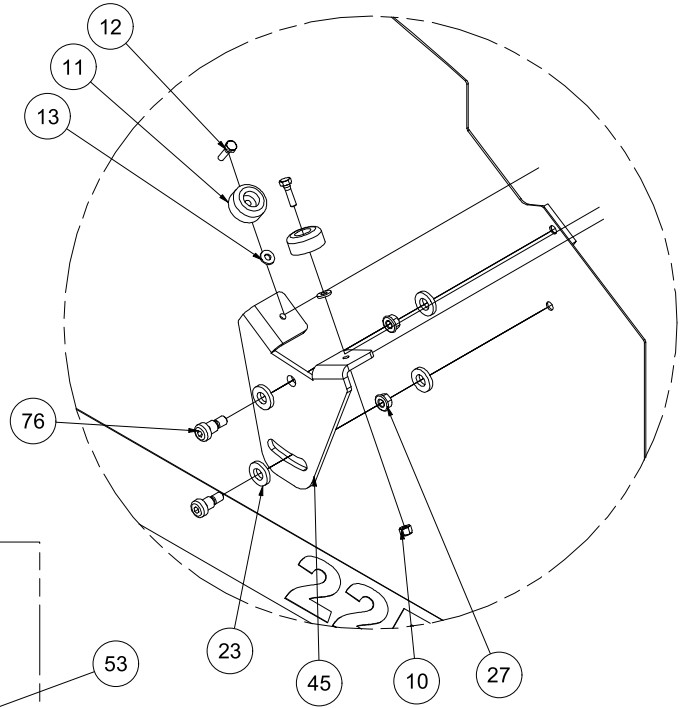
Parts list is on page 26



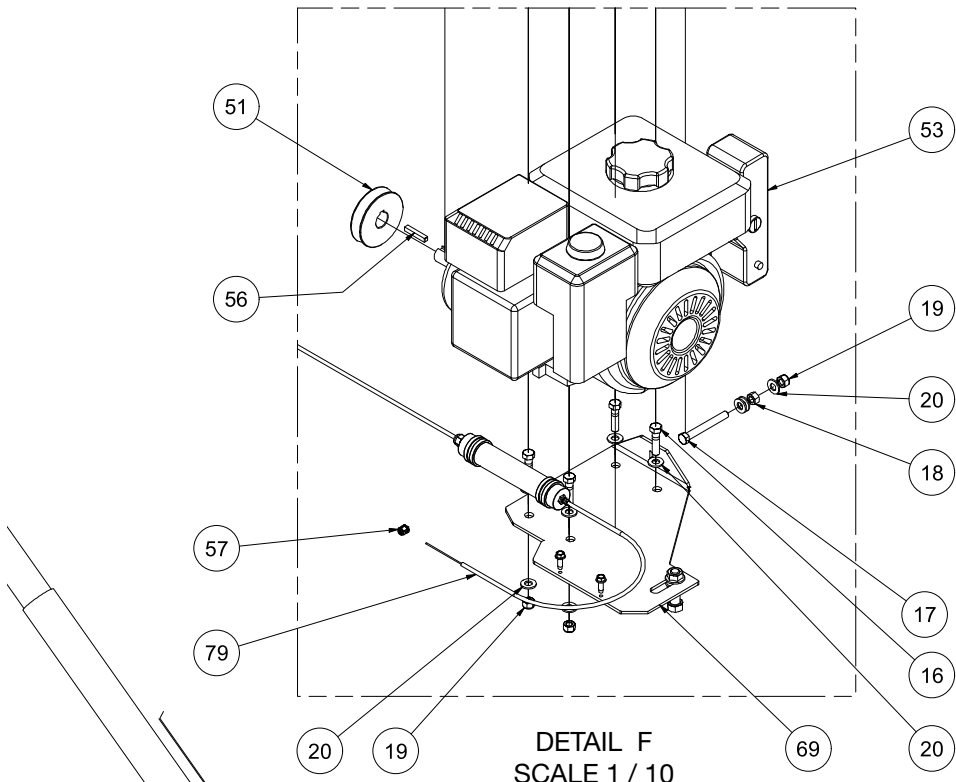




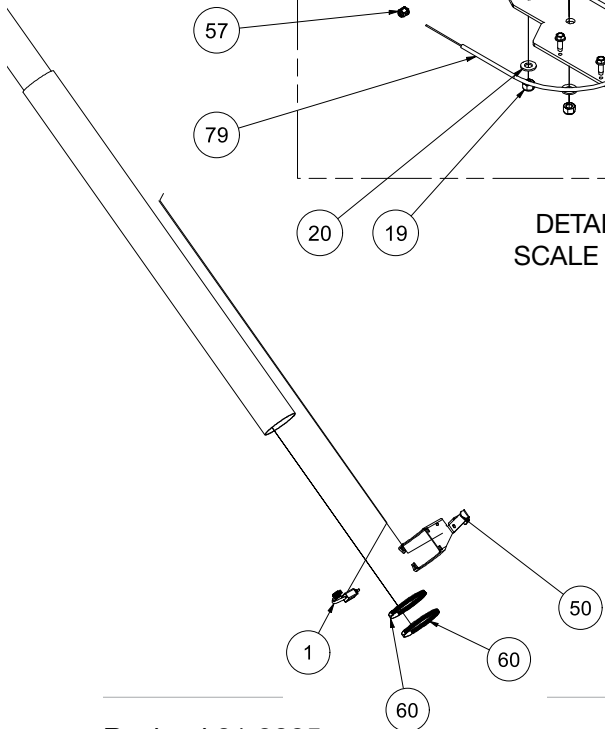
DETAIL B  
SCALE 1 / 10



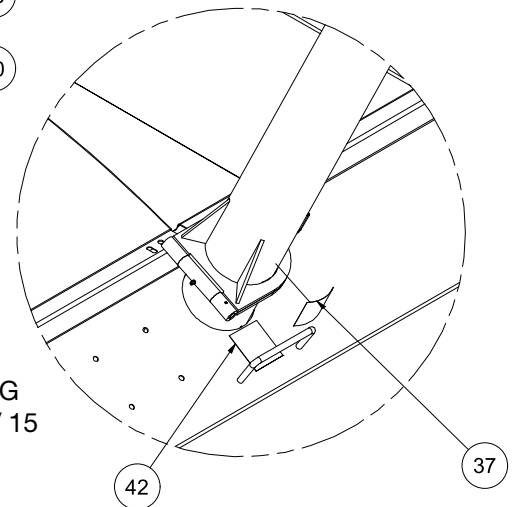
DETAIL E  
SCALE 1 / 8

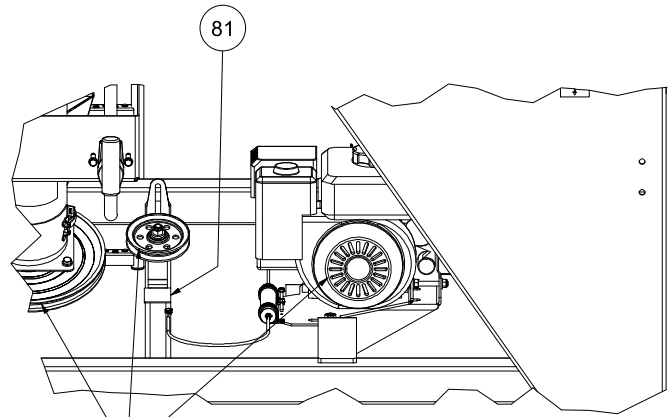
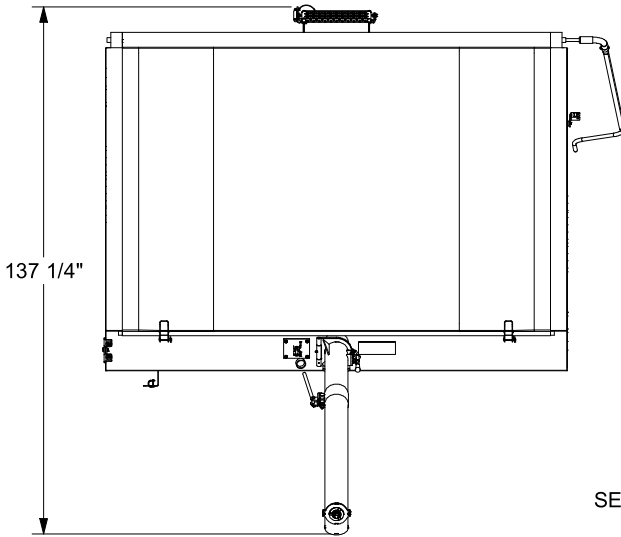


DETAIL F  
SCALE 1 / 10



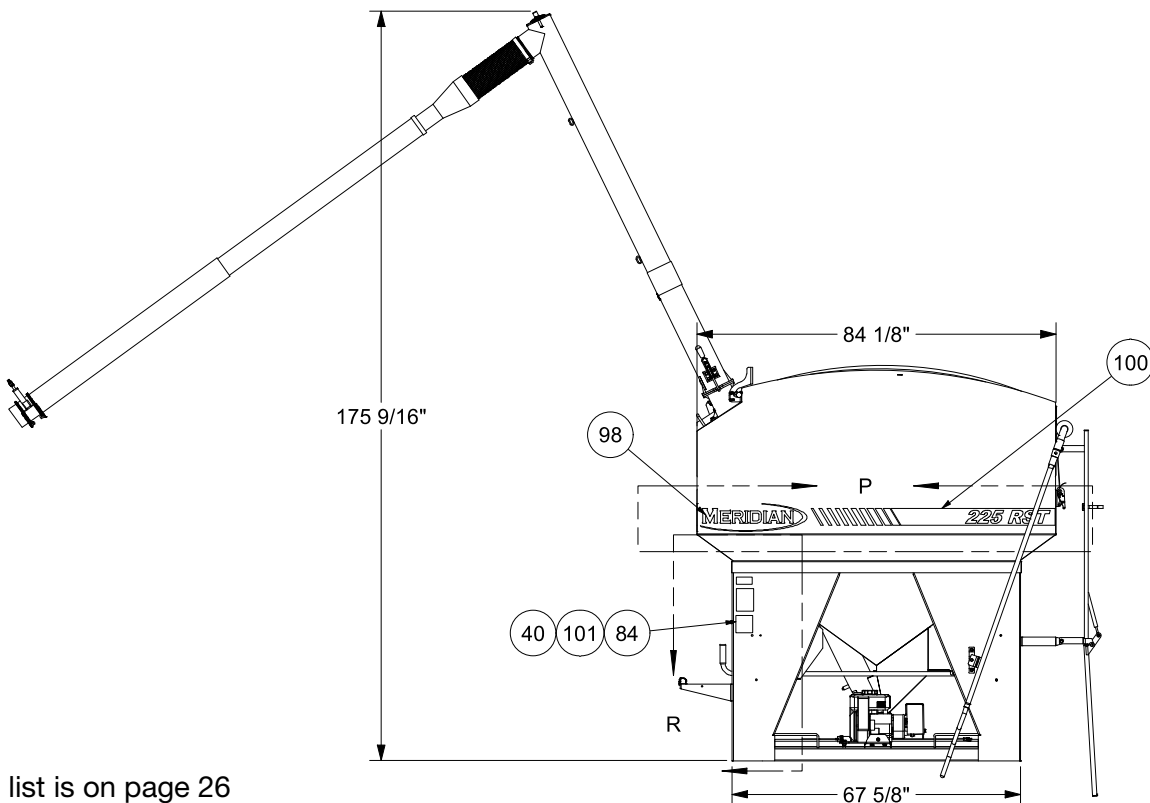
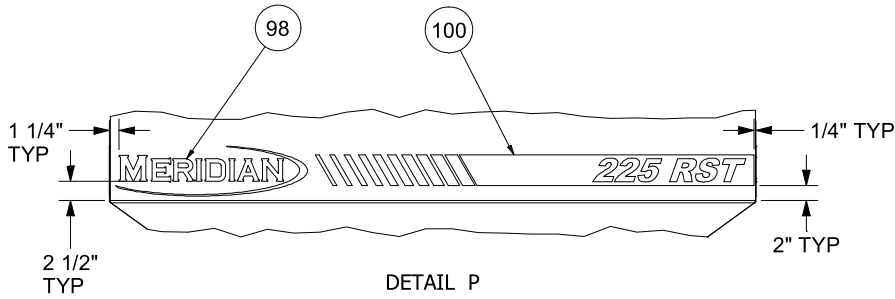
DETAIL G  
SCALE 1 / 15





SEE NOTE #2 & #3

DETAIL H  
SCALE 1 / 15  
PARTS HIDDEN FOR CLARITY



Parts list is on page 26

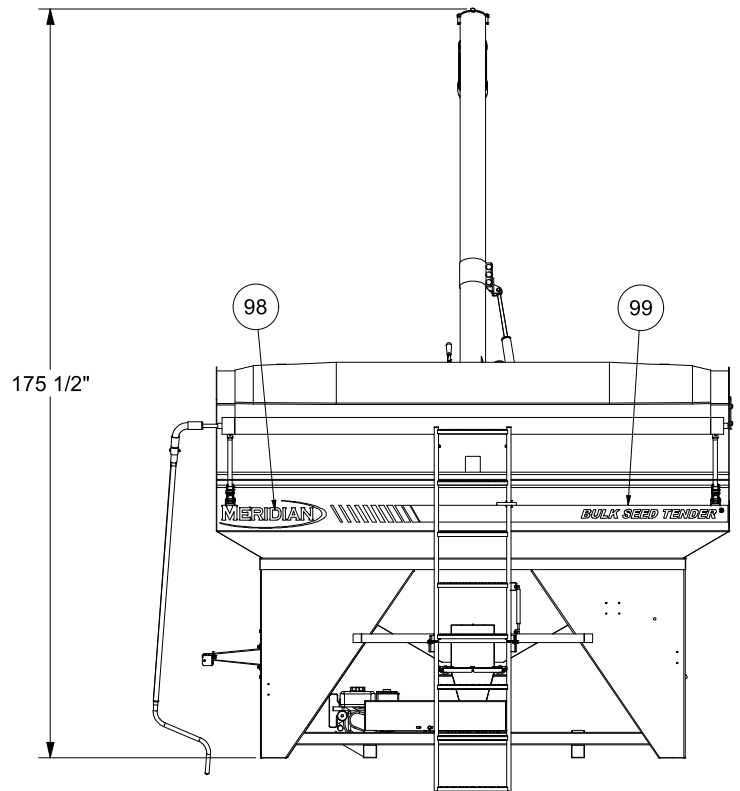
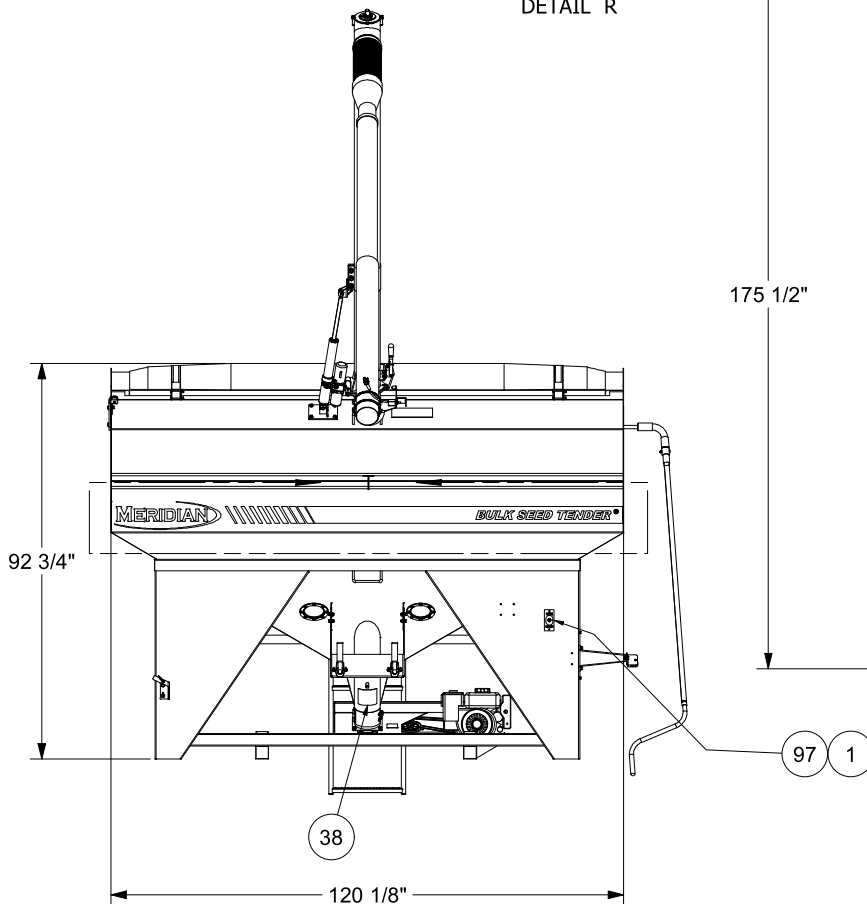
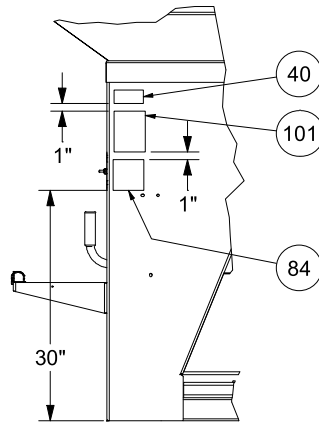
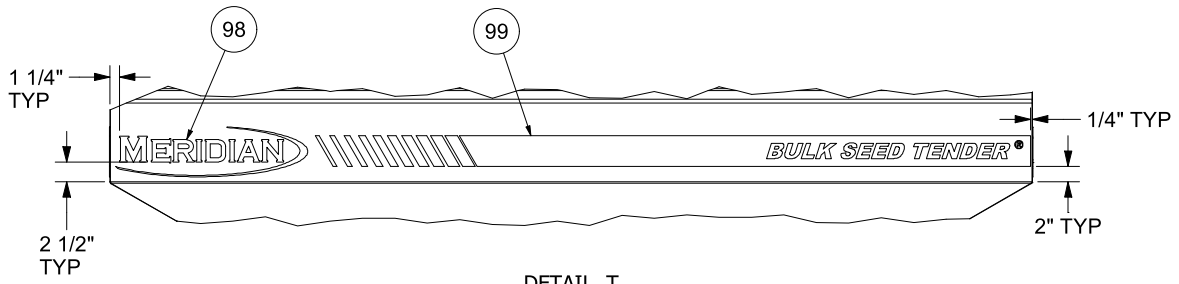


Table 6 - 225 RST Base Model Seed Tender

| ITEM | QTY | PART #   | DESCRIPTION                                  |
|------|-----|----------|--|
| 1    | 2   | 14002    | ACTUATOR SWITCH ASSEMBLY                     |
| 3    | 2   | 17996    | TAIL STOP ASSEMBLY                           |
| 4    | 4   | 18000    | 3" X 3" PLASTIC PLUG (SQR-SQ-24-1 CAPPLUGS)  |
| 5    | 1   | 18128    | HOLDER FOR MANUAL OMC-1                      |
| 6    | 1   | 18656    | BATTERY CABLE SET (76")(NOT SHOWN)           |
| 7    | 1   | 18715    | AUGER LOWER                                  |
| 8    | 1   | 18716    | AUGER, UPPER                                 |
| 9    | 1   | 19127    | Ø1/2"-13 UNC HEX NYLON LOCKNUT               |
| 10   | 4   | 19128    | Ø1/4"-20 UNC NYLON HEX NUT                   |
| 11   | 2   | 19133    | RUBBER BUMPER                                |
| 12   | 2   | 19301    | BOLT, HEX, 1/4-20 UNC X1                     |
| 13   | 4   | 19307    | WASHER, FLAT 1/4                             |
| 14   | 3   | 19315    | BOLT, CARRIAGE 5/16-18 UNC X 0.75            |
| 15   | 10  | 19318    | NUT, HEX, FLANGED, 5/16-18 UNC               |
| 16   | 4   | 19327    | BOLT, HEX, 3/8-16 UNC X1.5                   |
| 17   | 1   | 19330    | BOLT, HEX, 3/8-16 UNC X 3 STEEL, MILD, FT    |
| 18   | 9   | 19343    | NUT, HEX 3/8-16 UNC                          |
| 19   | 12  | 19347    | Ø3/8"-16 UNC NYLON LOCKNUT                   |
| 20   | 11  | 19348    | WASHER, FLAT 3/8                             |
| 21   | 8   | 19349    | Ø3/8" LOCK WASHER                            |
| 22   | 1   | 19356    | BOLT, HEX, 1/2-13 UNC X2                     |
| 23   | 7   | 19372    | WASHER, FLAT 1/2                             |
| 24   | 2   | 19404    | BUSHING, NYLON 1 INCH                        |
| 25   | 2   | 19447    | HANDLE GRIP                                  |
| 26   | 1   | 19541    | BOLT, HEX, 3/8-16 UNC X 0.75 STAINLESS STEEL |
| 27   | 13  | 19564    | NUT, HEX, FLANGED, 3/8-16 UNC                |
| 28   | 6   | 19568    | BOLT, HEX, FLANGED, 5/16-18 UNC X 0.75       |
| 29   | 11  | 19577    | BOLT, HEX, FLANGED, 3/8-16 UNC X 0.75        |
| 30   | 8   | 19579    | SCREW, FLANGED, SELF-TAPPING 3/8-16 UNC X 1  |
| 31   | 3   | 19586    | Ø5/16"-18 UNC NYLON LOCK NUT                 |
| 32   | 2   | 19626    | BOLT, HEX, FLANGED, 3/8-16 UNC X 1.75        |
| 37   | 1   | 19935    | PINCH POINT HAZARD DECAL                     |
| 38   | 1   | 19936    | ROTATING PART HAZARD                         |
| 39   | 2   | 19939    | FALLING HAZARD DECAL                         |
| 40   | 1   | 19984    | SERIAL NUMBER DECAL                          |
| 41   | 1   | 19991    | DECAL RECHARGE BATTERY                       |
| 42   | 1   | 20079    | ROTATING PART HAZARD DECAL (SMALL)           |
| 44   | 1   | 20307    | SLIDE GATE HANDLE SUPPORT                    |
| 45   | 1   | 20622    | PLATE TUBE REST                              |
| 46   | 1   | 21096-00 | SLIDE GATE RH                                |
| 47   | 1   | 21096-01 | GATE SLIDE LH                                |
| 48   | 1   | 21110-01 | FLEX SPOUT HANGER BRACKET                    |
| 49   | 1   | 21111    | BELT DRIVE BB71                              |
| 50   | 1   | 21240-04 | THROTTLE HANDLE (6 1/4") BLACK               |
| 51   | 1   | 21251-00 | 3.15 OD PULLEY                               |
| 52   | 1   | 21253-00 | IDLER PULLEY Ø5" W/BEARING 1/2" BORE         |
| 53   | 1   | 21255    | GX160 HONDA ENGINE                           |
| 54   | 1   | 21258-00 | BEARING                                      |
| 55   | 2   | 21259-00 | 52MM BEARING FLANGE                          |
| 56   | 2   | 21261-00 | DRIVE KEY 1/4" X 1/4"                        |
| 57   | 1   | 21270-00 | THROTTLE CABLE WIRE HOLDER HONDA             |
| 59   | 1   | 21323-00 | 12IN PULLEY                                  |

|     |         |                    |   |
|-----|---------|--------------------|---|
| 60  | 2       | 21433-00           | HOSE CLAMP - 6IN LIGHT DUTY   |
| 61  | 2       | 26343              | RIGHT SLIDE GATE HANDLE   |
| 62  | 1       | 26422              | AGRI COVER TARP KIT (225 RST)   |
| 63  | 1       | 31476              | LADDER ASSEMBLY (220 TENDER)  |
| 64  | 1       | 31577              | BODY WELDMENT 225RST  |
| 65  | 1       | 36033-00           | TOP PLATE BEARING ASSEMBLY  |
| 66  | 1       | 36035-00           | DRIVE BELT GUARD ASSEMBLY   |
| 67  | 1       | 36106-00           | WIRE HARNESS ACTUATOR LOWER (NOT SHOWN)                                       |
| 68  | 1       | 38503-01           | 4FT CURLY CORD (NOT SHOWN)  |
| 69  | 1       | 38511-00           | ACTUATOR BRACKET ASSEMBLY   |
| 70  | 1       | 38530-00           | SPOUT 6 IN 3 TIER   |
| 71  | 2       | 47008              | VIEW GLASS, S.S. RING ASSM.   |
| 74  | 2       | AGRI COVER - 71002 | ADJUSTABLE BRACKET  |
| 75  | 2       | AGRI COVER - 80028 | RATCHET AND STRAP W/HOOK  |
| 76  | 2       | 19082              | HEXAGON SOCKET HEAD SHOULDER SCREW  |
| 77  | 1       | 17509              | CRUSH - ELECTROCUTION HAZARD DECAL  |
| 78  | 1       | 50169              | SWITCH BATTERY TOP MOUNT ASSEMBLY   |
| 79  | 1       | 17721              | ACTUATOR W/ CABLE & CLAMPS - RMC2500  |
| 80  | 1       | 19937              | DECAL WARNING MISSING SHIELD  |
| 81  | 1       | 18435              | DECAL ENTANGLEMENT HAZARD   |
| 82  | 4       | 19569              | BOLT, HEX, FLANGED, 3/8-16 UNC X 1  |
| 83  | 2       | 19099              | BOLT, HEX, 1/4-20 UNC X 0.875 STEEL, MILD                                     |
| 84  | 1       | 10479              | DECAL BUILT IN AMERICA 4"   |
| 85  | 1       | 19693              | PIN, SNAP, ZINC 1/4" X 1 3/8"   |
| 86  | 1       | 19123              | FOLD OVER AUGER LATCH - DESTACO 371-M-25                                      |
| 87  | 4       | 19309              | BOLT, HEX, 5/16-18 UNC X0.75  |
| 88  | 1       | 38668              | ACTUATOR MOUNTING PLATE WELDMENT  |
| 89  | 1       | 21198              | BACKING PLATE   |
| 90  | 4       | 18680              | BOLT, HEX, FLANGED, STEEL, MILD 3/8-16 UNC X 1.25                             |
| 91  | 4       | 18473              | WASHER, 3/8 - WIDE - TYPE A STEEL, MILD                                       |
| 92  | 1       | 17307              | CLAMP COMPRESSION 6IN 3 BOLT  |
| 93  | 1       | 38667              | ACTUATOR HINGE WELDMENT   |
| 94  | 2       | 17306              | CLEVIS PIN, Ø5/8"X2-1/4" LONG, 2" USABLE, ZINC                                |
| 95  | 2       | 18671              | 5/32 X 1 1/4 EXTENDED PRONG COTTER PIN  |
| 96  | 1       | 17304              | ACTUATOR HYD/ELEC KYB 12VDC 42A 2,100 LB                                      |
| 97  | 1       | 17836              | AUGER/CONVEYOR LIFT DECAL   |
| --- | 0.34342 | 14022              | MOTOR OIL 10W-30 (GAL)  |
| --- | 1       | 10995              | OPERATOR'S MANUAL   |
| --- | 1       | 17305              | WIRE HARNESS 225 ACTUATOR LIFT (NOT SHOWN)                                    |
| 98  | 4       | 16959              | DECAL MERIDIAN 25" LG BLACK   |
| 99  | 2       | 12086              | DECAL BULK SEED TENDER BLACK STRIPE 225RST                                    |
| 100 | 2       | 12087              | DECAL 225RST BLACK STRIPE   |
| 101 | 1       | 19934              | DECAL CAUTION READ MANUAL   |
| 102 | 2       | TARP STOP          | TALL SS QUICK RELEASE INSET TARP STOP AGRI COVER - 4003260 - (COMES WITH KIT) |

### 225 RST LOWER AUGER TUBE

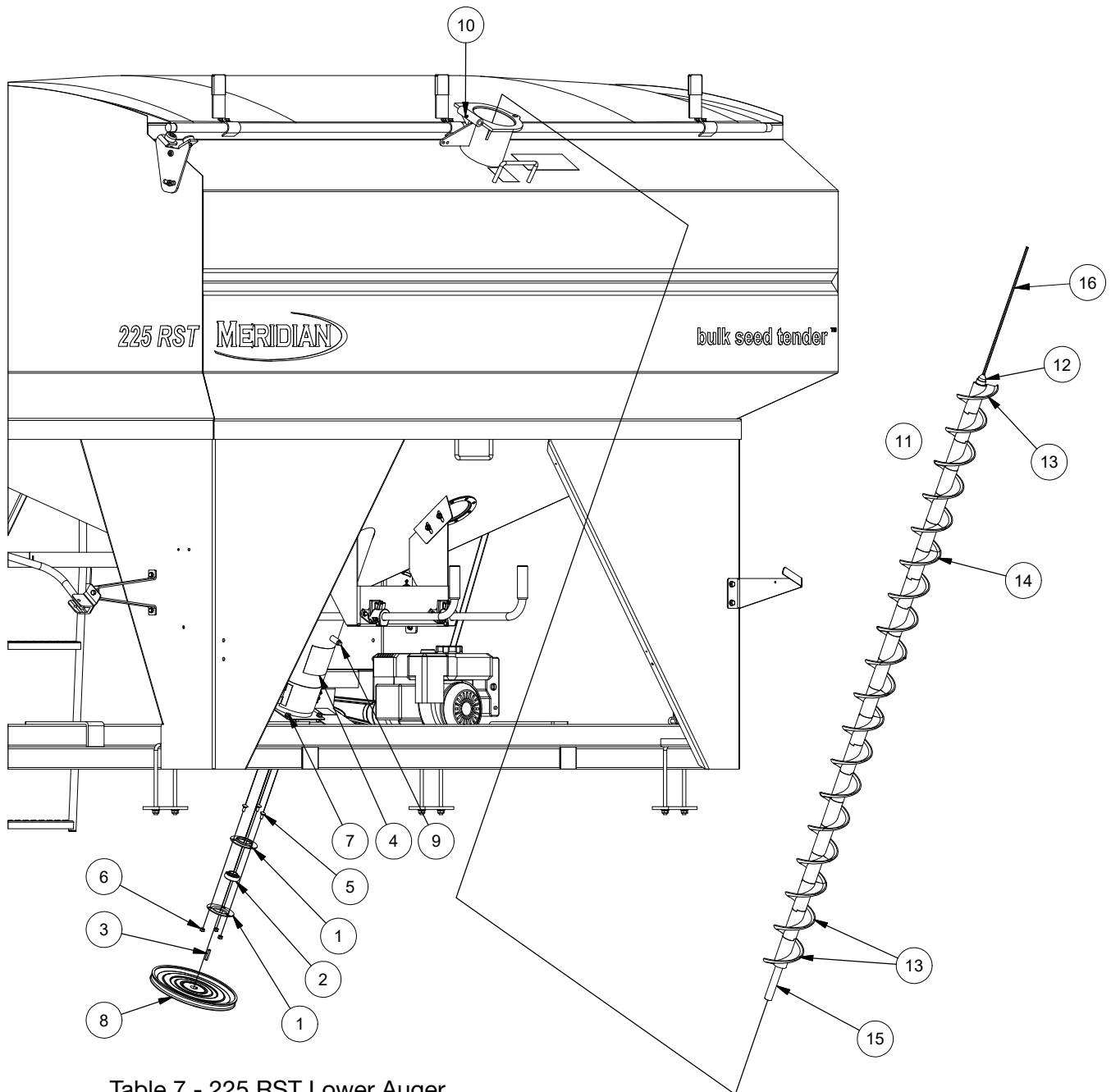


Table 7 - 225 RST Lower Auger

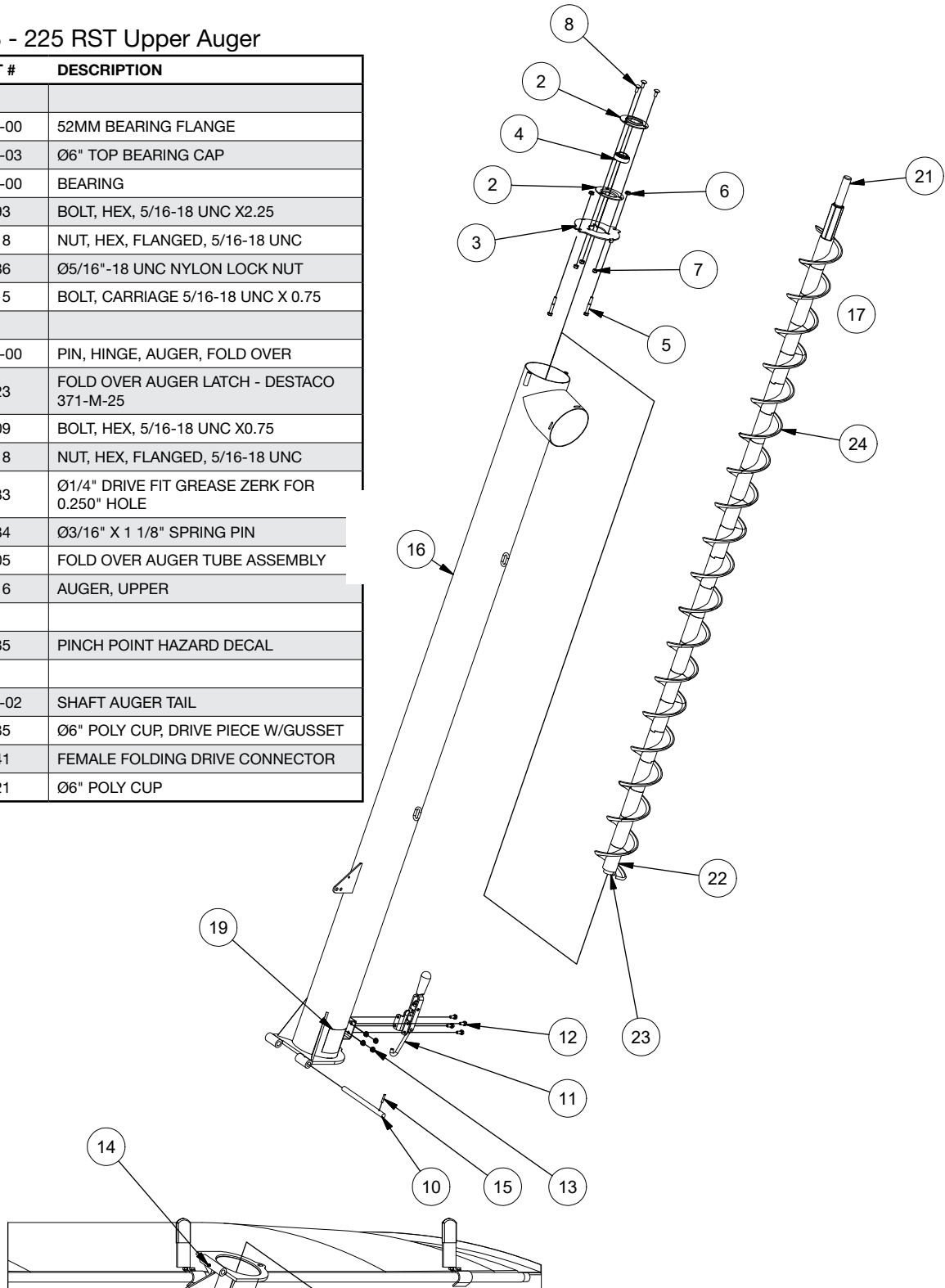
| ITEM | QTY | PART #   | DESCRIPTION                           |
|------|-----|----------|---------------------------------------|
| 1    | 2   | 21259-00 | 52MM BEARING FLANGE                   |
| 2    | 1   | 21258-00 | BEARING                               |
| 3    | 1   | 21261-00 | DRIVE KEY                             |
| 4    | 1   | 19936    | ROTATING PART HAZARD                  |
| 5    | 3   | 19315    | BOLT, CARRIAGE 5/16-18 UNC X 0.75     |
| 6    | 3   | 19586    | Ø5/16"-18 UNC NYLON LOCK NUT          |
| 7    | 4   | 19577    | BOLT, HEX, FLANGED, 3/8-16 UNC X 0.75 |
| 8    | 1   | 21323-00 | 12IN PULLEY                           |
| 9    | 1   | 18849    | 1/4" STEEL PLUG                       |

|    |    |          |   |
|----|----|----------|---|
| 10 | 1  | 19283    | Ø1/4" DRIVE FIT GREASE ZERK FOR 0.250" HOLE |
| 11 | 1  | 18715    | AUGER LOWER                                 |
| 12 | 1  | 10240    | MALE FOLDING DRIVE CONNECTOR W/ CABLE       |
| 13 | 3  | 19635    | Ø6" POLY CUP, DRIVE PIECE W/GUSSET          |
| 14 | 18 | 18621    | Ø6" POLY CUP                                |
| 15 | 1  | 21452-00 | SHAFT BOTTOM DRIVE 6IN AUGER                |
| 16 | 1  | 21445-00 | CABLE AUGER ALIGNMENT                       |

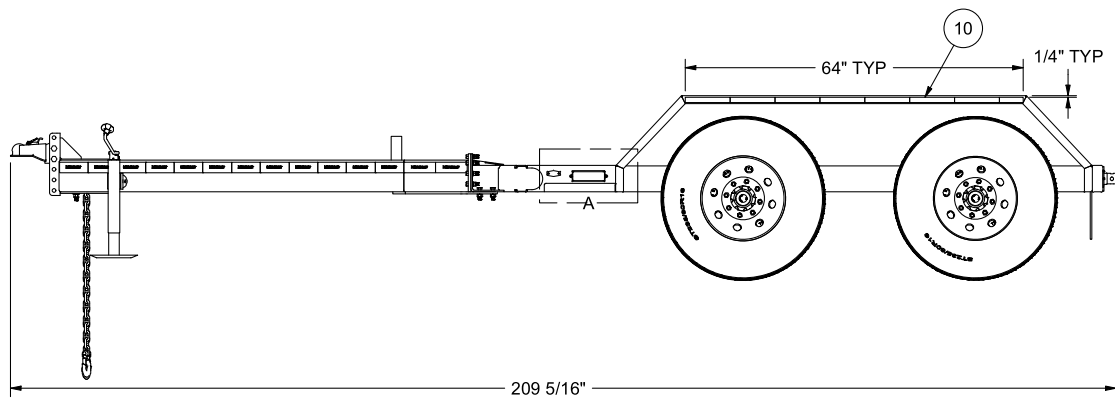
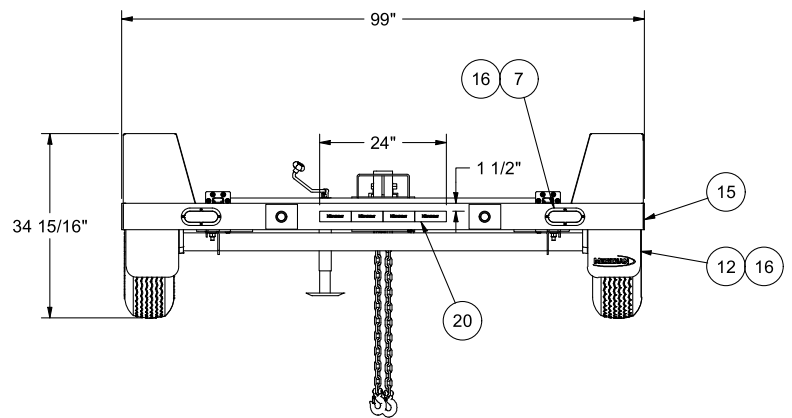
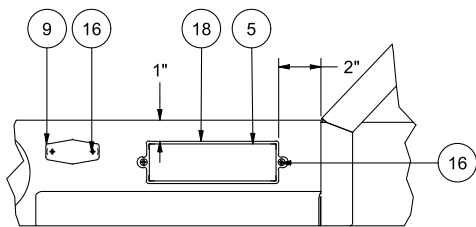
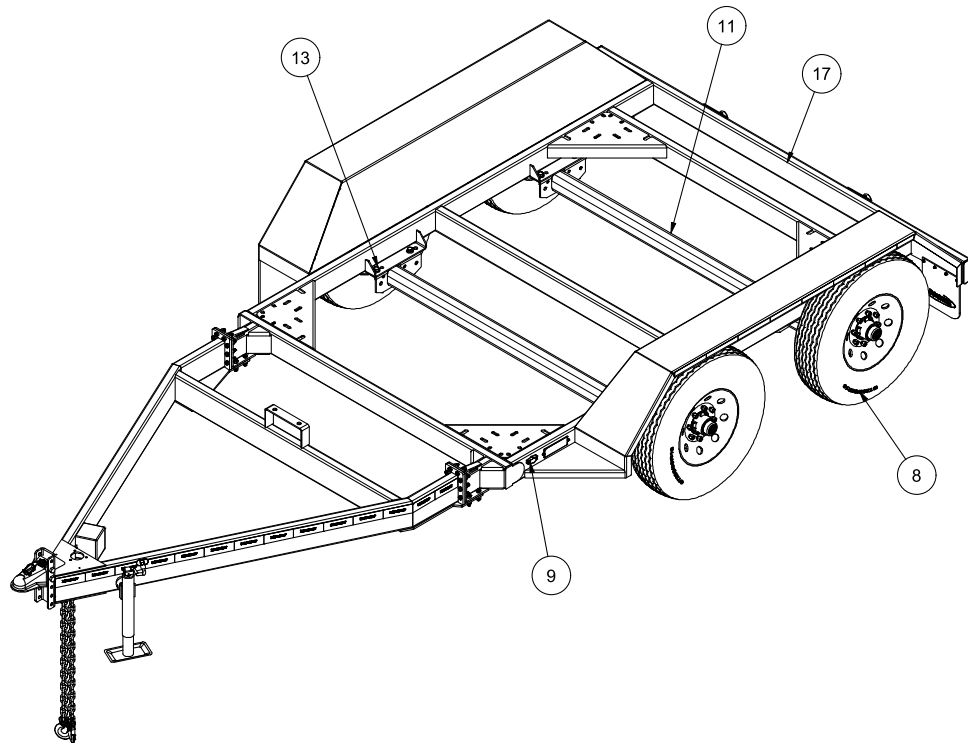
## 225 RST UPPER AUGER TUBE

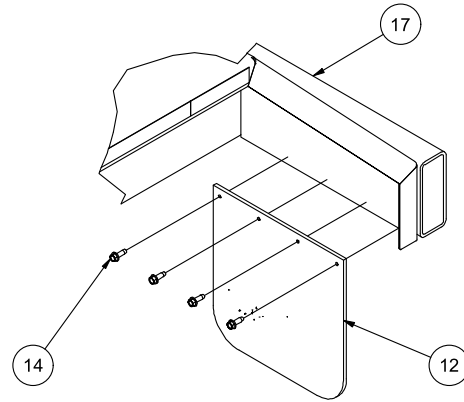
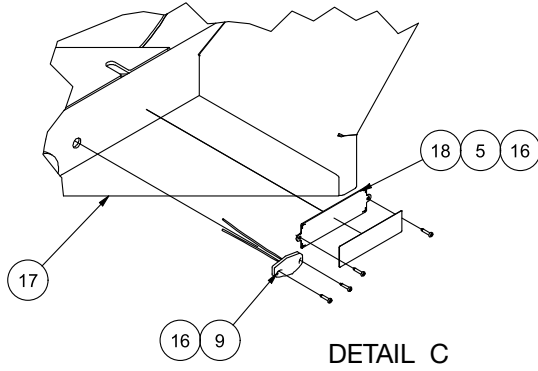
Table 8 - 225 RST Upper Auger

| ITEM | QTY | PART #   | DESCRIPTION                                 |
|------|-----|----------|---|
| 2    | 2   | 21259-00 | 52MM BEARING FLANGE                         |
| 3    | 1   | 21222-03 | Ø6" TOP BEARING CAP                         |
| 4    | 1   | 21258-00 | BEARING                                     |
| 5    | 2   | 19593    | BOLT, HEX, 5/16-18 UNC X2.25                |
| 6    | 2   | 19318    | NUT, HEX, FLANGED, 5/16-18 UNC              |
| 7    | 3   | 19586    | Ø5/16"-18 UNC NYLON LOCK NUT                |
| 8    | 3   | 19315    | BOLT, CARRIAGE 5/16-18 UNC X 0.75           |
| 10   | 1   | 21223-00 | PIN, HINGE, AUGER, FOLD OVER                |
| 11   | 1   | 19123    | FOLD OVER AUGER LATCH - DESTACO 371-M-25    |
| 12   | 4   | 19309    | BOLT, HEX, 5/16-18 UNC X0.75                |
| 13   | 4   | 19318    | NUT, HEX, FLANGED, 5/16-18 UNC              |
| 14   | 1   | 19283    | Ø1/4" DRIVE FIT GREASE ZERK FOR 0.250" HOLE |
| 15   | 1   | 19284    | Ø3/16" X 1 1/8" SPRING PIN                  |
| 16   | 1   | 36005    | FOLD OVER AUGER TUBE ASSEMBLY               |
| 17   | 1   | 18716    | AUGER, UPPER                                |
| 19   | 1   | 19935    | PINCH POINT HAZARD DECAL                    |
| 21   | 1   | 21235-02 | SHAFT AUGER TAIL                            |
| 22   | 1   | 19635    | Ø6" POLY CUP, DRIVE PIECE W/GUSSET          |
| 23   | 1   | 10241    | FEMALE FOLDING DRIVE CONNECTOR              |
| 24   | 21  | 18621    | Ø6" POLY CUP                                |



# 225 RST TRAILER

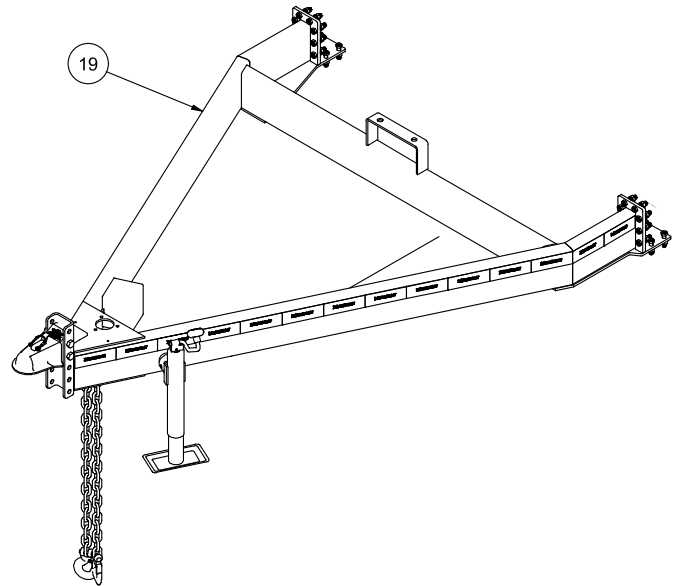


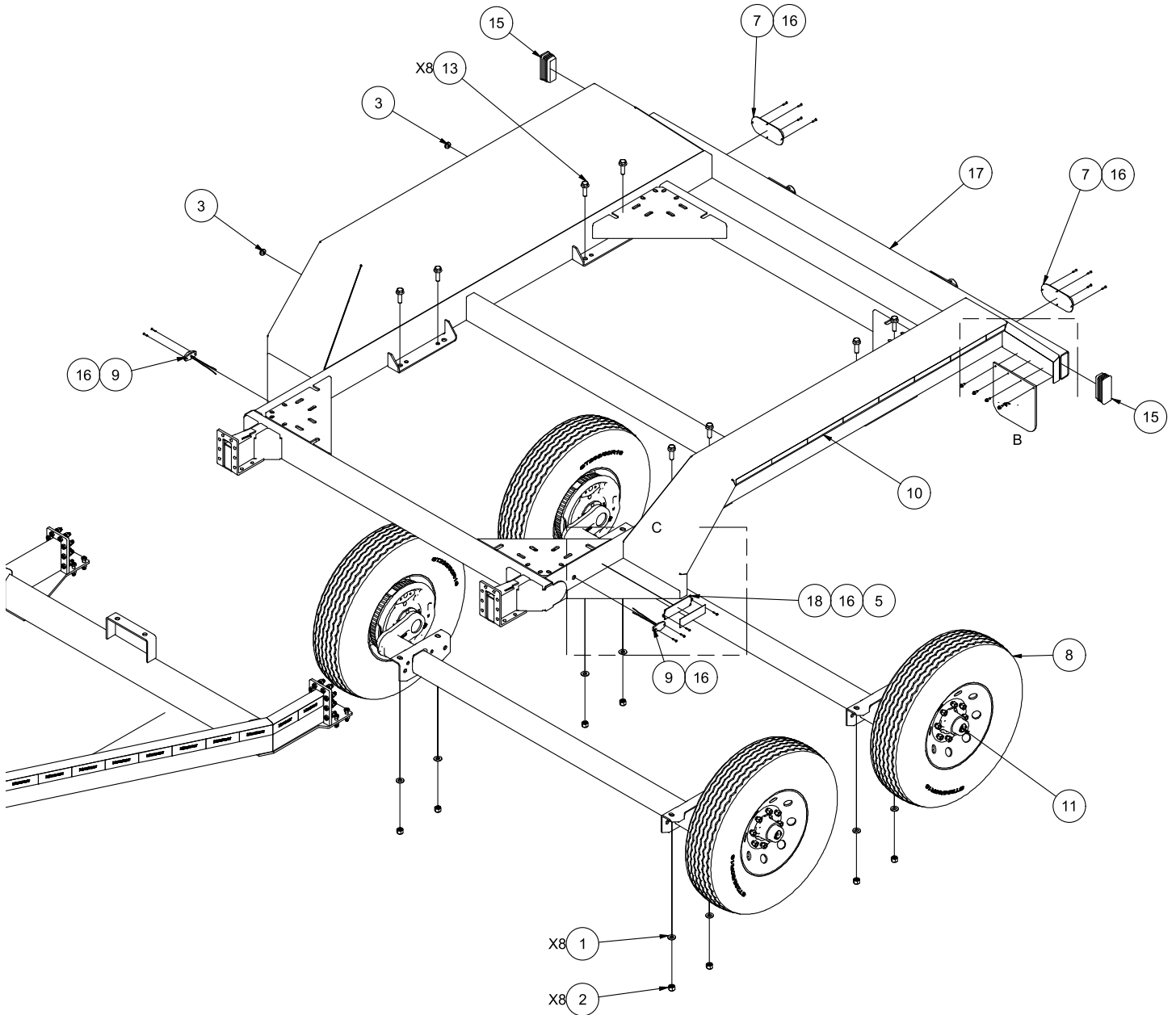


DETAIL B  
MUD FLAP INSTALL  
TYP BOTH SIDES

Table 9 - Trailer T14 Bumper Hitch

| ITEM | QTY   | PART # | DESCRIPTION   |
|------|-------|--------|---|
| 1    | 8     | 10283  | 5/8" FLAT WASHER GR. 8                                    |
| 2    | 8     | 10285  | 5/8-11 UNC LOCKNUT GR. 8                                  |
| 3    | 2     | 14021  | GROMMET 1/2" ID X 1-1/16" OD FOR 3/16" WALL X 13/16" HOLE |
| 4    | 1     | 14035  | T14000 BODY WIRE HARNESS                                  |
| 5    | 1     | 17532  | DECAL, TRAILER VIN# TEMPLATE                              |
| 6    | 8 FT  | 19136  | 1/2" SPLIT LOOM   |
| 7    | 2     | 18117  | TAIL LIGHT WITH 10 DIODES (LED STL-78RB)                  |
| 8    | 4     | 18131  | ST235/80R16-E TIRE, STEEL RIM ASSEMBLY                    |
| 9    | 2     | 18151  | AMBER CLEARANCE LIGHT                                     |
| 10   | 12 FT | 18153  | FENDER REFLECTIVE TAPE                                    |
| 11   | 2     | 18193  | 7000 LBS AXLE, 89.125" HUB FACE, 9" HOLES                 |
| 12   | 2     | 19274  | MUD FLAP, 10"X10"X1/4" THK, W/MERIDIAN LOGO               |
| 13   | 8     | 19567  | BOLT, HEX, FLANGED, 5/8-11 UNC X 2 GRADE 8                |
| 14   | 8     | 19597  | Ø1/4"-14 X 3/4" HEX WASHER HEAD SELF DRILLING SCREW       |
| 15   | 2     | 19619  | 5" X 2" TUBE PLUG   |
| 16   | 14    | 19779  | #8-18 X 3/4" SELF DRILLING ZINC SCREW                     |
| 17   | 1     | 22911  | T14000 FRAME WELDMENT                                     |
| 18   | 1     | 55206  | VIN TAG MOUNT PLATE STAINLESS                             |
| 19   | 1     | 80166  | TRAILER BUMPER HITCH ASSEMBLY 2016                        |
| 20   | 2 FT  | 18096  | TAPE REFLECTIVE MERIDIAN 2X6X6                            |





### BUMPER HITCH

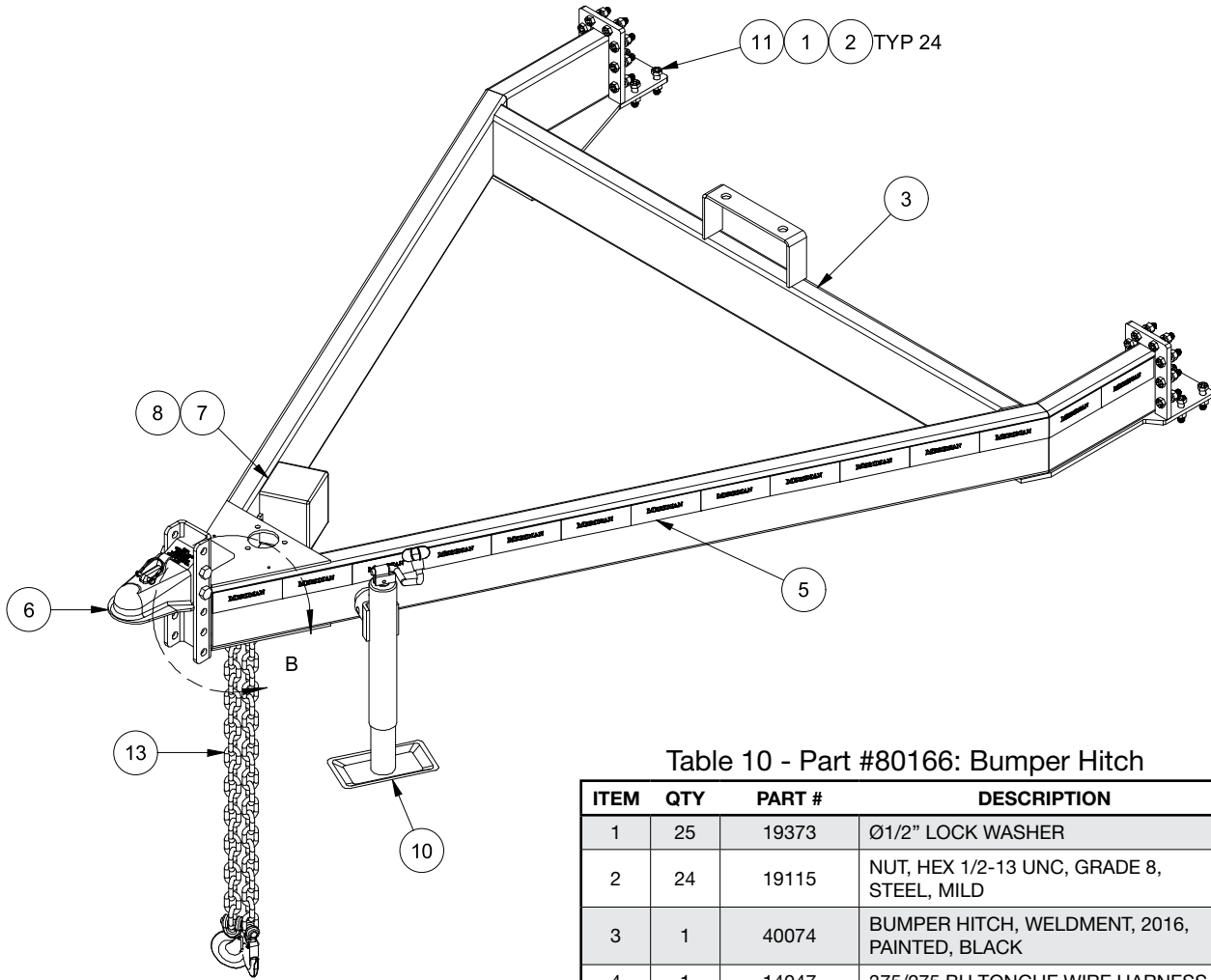
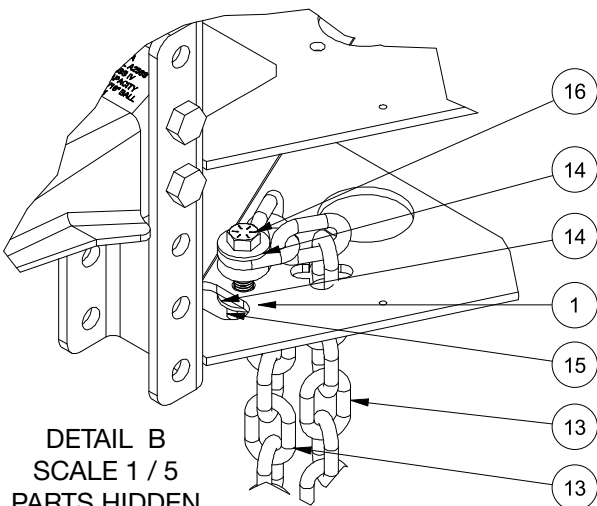


Table 10 - Part #80166: Bumper Hitch

| ITEM | QTY  | PART # | DESCRIPTION  |
|------|------|--------|--|
| 1    | 25   | 19373  | Ø1/2" LOCK WASHER                                    |
| 2    | 24   | 19115  | NUT, HEX 1/2"-13 UNC, GRADE 8, STEEL, MILD           |
| 3    | 1    | 40074  | BUMPER HITCH, WELDMENT, 2016, PAINTED, BLACK         |
| 4    | 1    | 14047  | 375/275 BH TONGUE WIRE HARNESS                       |
| 5    | 14FT | 18096  | TAPE REFLECTIVE MERIDIAN 2X6X6                       |
| 7    | 1    | 19275  | BATTERY BREAKAWAY BA10-150                           |
| 8    | 3    | 19779  | #8-18 X 3/4" SELF DRILLING ZINC SCREW                |
| 9    | 2    | 19597  | Ø1/4"-14 X 3/4" HEX WASHER HEAD SELF DRILLING SCREW  |
| 10   | 1    | 18164  | 5K, 10" STROKE, TOP WIND JACK                        |
| 11   | 24   | 15059  | BOLT, HEX, 1/2"-13 UNC X 2" GRADE 8                  |
| 12   | 1    | 18679  | CLAMP CUSHIONED LOOP (1/2")                          |
| 13   | 2    | 19171  | 3/8" X 35" , GRADE 70 SAFETY CHAIN (26400# CAPACITY) |
| 14   | 2    | 18487  | WASHER, 1/2 - WIDE - TYPE A STEEL, MILD              |
| 15   | 1    | 17234  | NYLON LOCK NUT, 1/2"-13, GRADE 8, ZINC               |
| 16   | 1    | 10278  | BOLT HEX 1/2"-13 FULL X 3" L GRADE 5 ZINC            |
| 17   | 10FT | 19136  | LOOM 1/2"  |
| 18   | 1    | 40367  | TRAILER COUPLER ASSEMBLY KIT 2 5/16" BALL 21K        |



DETAIL B  
SCALE 1 / 5  
PARTS HIDDEN  
FOR CLARITY

### GOOSENECK HITCH

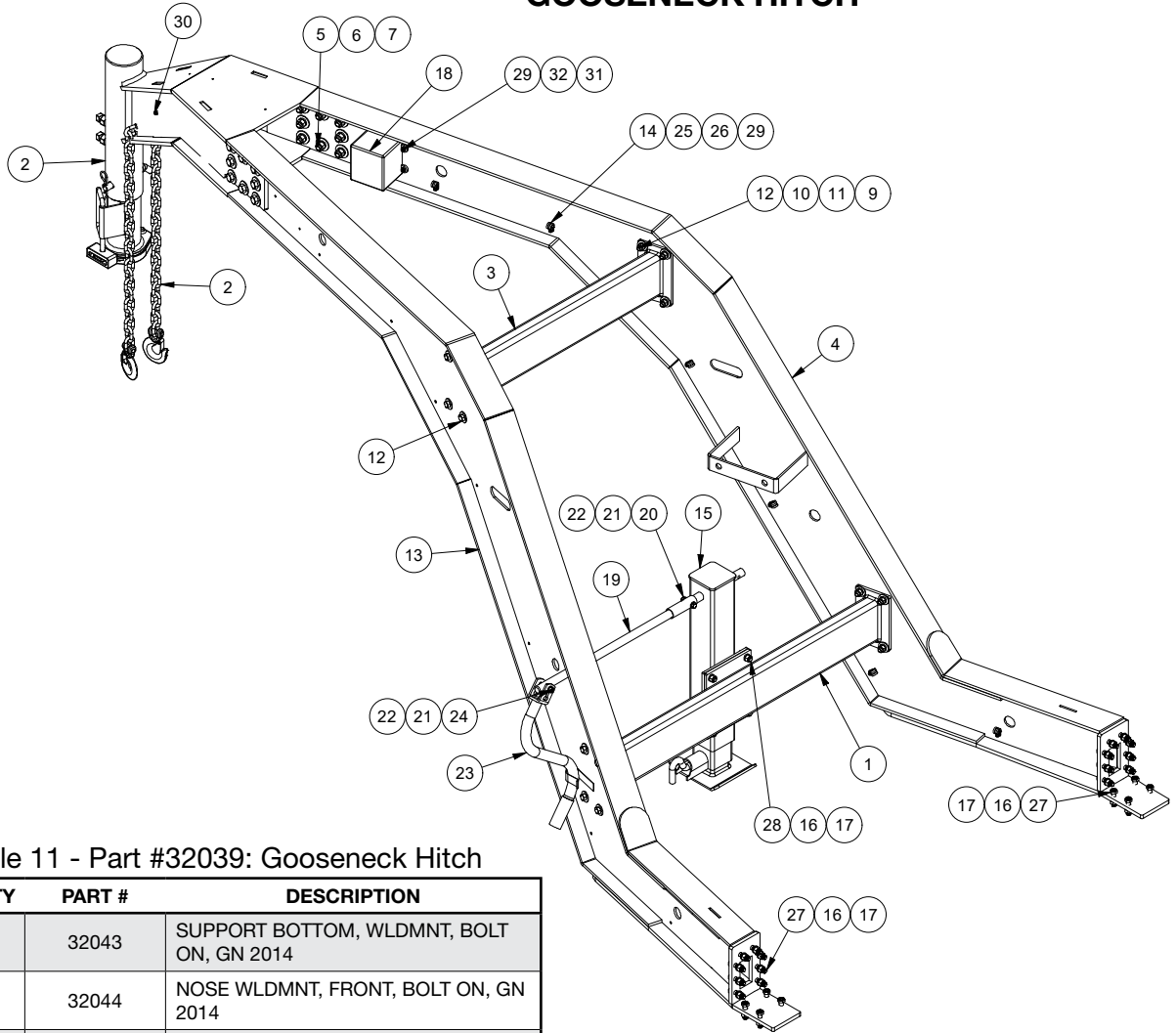


Table 11 - Part #32039: Gooseneck Hitch

| ITEM | QTY | PART #   | DESCRIPTION   |
|------|-----|----------|---|
| 1    | 1   | 32043    | SUPPORT BOTTOM, WLDMNT, BOLT ON, GN 2014              |
| 2    | 1   | 32044    | NOSE WLDMNT, FRONT, BOLT ON, GN 2014                  |
| 3    | 1   | 32042    | SUPPORT TOP, WLDMNT, BOLT ON, GN 2014                 |
| 4    | 1   | 32040    | SIDE BEAM ASSEMBLY, RIGHT, I-BEAM GOOSENECK           |
| 5    | 16  | 19375    | BOLT, HEX, 5/8-11 UNC X 2 STEEL, MILD                 |
| 6    | 16  | 18351    | NUT, HEX 5/8-11 UNC STEEL, MILD                       |
| 7    | 32  | 19384    | Ø5/8" FLAT WASHER                                     |
| 8    | 16  | 18460    | WASHER, HELICAL SPRING LOCK 5/8 STEEL, MILD           |
| 9    | 16  | 18486    | 1/2" REGULAR HELICAL SPRING LOCK WASHERS(INCH SERIES) |
| 10   | 32  | 18487    | WASHER, 1/2 - WIDE - TYPE A STEEL, MILD               |
| 11   | 16  | 19369 MS | NUT, HEX 1/2-13 UNC STEEL, MILD                       |
| 12   | 16  | 10411    | BOLT, HEX, 1/2-13 UNC X 1.75 STEEL, MILD              |
| 13   | 1   | 32041    | SIDE BEAM ASSEMBLY, LEFT, I-BEAM GOOSENECK            |
| 14   | 10  | 18679    | CLAMP CUSHIONED LOOP (1/2")                           |
| 15   | 1   | 25322    | GOOSENECK JACK WELDMENT - 12K                         |
| 16   | 28  | 19373    | Ø1/2" LOCK WASHER                                     |
| 17   | 28  | 19115    | NUT, HEX 1/2-13 UNC, GRADE 8, STEEL, MILD             |

|     |    |                    |   |
|-----|----|--------------------|---|
| 18  | 1  | 19275              | BATTERY BREAKAWAY BA10-150                          |
| 19  | 1  | 25325              | HANDLE EXTENSION GN JACK                            |
| 20  | 1  | 19626              | BOLT, HEX, FLANGED, 3/8-16 UNC X 1.75               |
| 21  | 3  | 19348              | WASHER, FLAT 3/8                                    |
| 22  | 2  | 19347              | Ø3/8"-16 UNC NYLON LOCKNUT                          |
| 23  | 1  | 18197-CRANK HANDLE | CRANK HANDLE GN JACK                                |
| 24  | 1  | 19592              | BOLT, HEX, 3/8-16 UNC X2.5                          |
| 25  | 7  | 18485              | WASHER, 1/4 - NARROW - TYPE A STEEL, MILD           |
| 26  | 7  | 19305              | NUT, HEX 1/4-20 UNC                                 |
| 27  | 24 | 15059              | BOLT, HEX, 1/2"-13 UNC X 2" GRADE 8                 |
| 28  | 4  | 19116              | BOLT, HEX, 1/2-13 UNC X 1.5, GRADE 8, STEEL, MILD   |
| 29  | 10 | 19099              | BOLT, HEX, 1/4-20 UNC X 0.875 STEEL, MILD           |
| 30  | 4  | 19597              | Ø1/4"-14 X 3/4" HEX WASHER HEAD SELF DRILLING SCREW |
| 31  | 3  | 19307              | WASHER, FLAT 1/4                                    |
| 32  | 3  | 19126              | NUT, HEX, FLANGED, 1/4-20 UNC                       |
| --- | 1  | 14043              | WIRE HARNESS (NOT SHOWN)                            |

This page intentionally left blank

# LIMITED WARRANTY STATEMENT

Meridian Manufacturing Inc. (hereinafter referred to as Meridian) warrants all products sold hereunder to be free from defects in manufacturing and workmanship, under normal and proper storage, service, and use, for a period of 2 (TWO) years: the first year - full warranty on Parts and Labor, the second year - Parts Only; when used in accordance with the manufacturer's guidelines, from the first date of use. Our liability extends only to the repair or replacement of the defective parts. No labor charge for the correction of the defect, by repair or replacement, will be paid by Meridian, unless prior written authorization has been granted by Meridian. Units that have been in service, then sold will carry the remainder of the 2 year warranty from Meridian.

This warranty is not applicable to, and Meridian makes no warranty with respect to, any parts not installed by Meridian or its representatives.

No implied warranty shall apply beyond the aforementioned warranty period. The foregoing warranty is exclusive of all other statutory, written or oral warranties, and no other warranties of any kind, statutory or otherwise, are given or herein expressed.

Meridian will not, under any circumstance; whether as a result of breach of contract, breach of warranty, tort, strict liability or otherwise; be liable for consequential, incidental, special or exemplary damages. This includes, but not limited to: loss of profits, loss of use or damage to any property or equipment, cost of capital, cost of substitute product, facilities or services, down time costs or claim of claimant's customers. Meridian liability for all claims of any kind or for any loss or damage arising out of, resulting from or concerning any aspect of this warranty, or from the products or services furnished hereunder; shall not exceed the purchase price allocable to the specific product which gives rise to the claim. Any or all such liability shall terminate upon the expiration of the warranty set forth above.

Certain chemicals may exist in the end user's locations, which may release airborne contaminants that can directly impact the integrity of essential paint and components. Exposure of these chemicals, to components with different chemical combinations may result in significant damage to paint, decals and mechanical failure. Meridian warranty does not cover these conditions unless otherwise noted.

All Meridian products that fall under warranty and needs service must be brought back to the dealer or point of purchase, unless otherwise agreed upon by the Meridian Warranty Department.

Register your product at: [www.meridianmfg.com](http://www.meridianmfg.com)

For warranty information, email: [warrantyusa@meridianmfg.com](mailto:warrantyusa@meridianmfg.com) | phone: (800) 437-2334

## WARRANTY REQUEST PROCEDURE

1. The product must be registered with Meridian Manufacturing Inc.
2. The purchaser must contact the dealer, from where the unit was purchased, immediately upon discovery of any defects.
3. A completed Warranty Request (Claim) Form must be submitted by the dealer to the Meridian's warranty representative for review and any subsequent course of action.
  - Warranty requests must be completed with ALL required information in order it to be considered for approval.
  - Send photographs of the entire piece of equipment, and of the specific area of concern.
4. Warranty repair work will only be performed by Meridian or an approved representative of Meridian. Warranty work completed prior to Meridian's approval will NOT be honoured. Failure to follow this procedure may affect any or all of this warranty.
5. All warranty requests will be adjudicated at the sole discretion of Meridian and in accordance with the terms and conditions of the warranty.



(800) 437-2334 | [www.meridianmfg.com](http://www.meridianmfg.com)